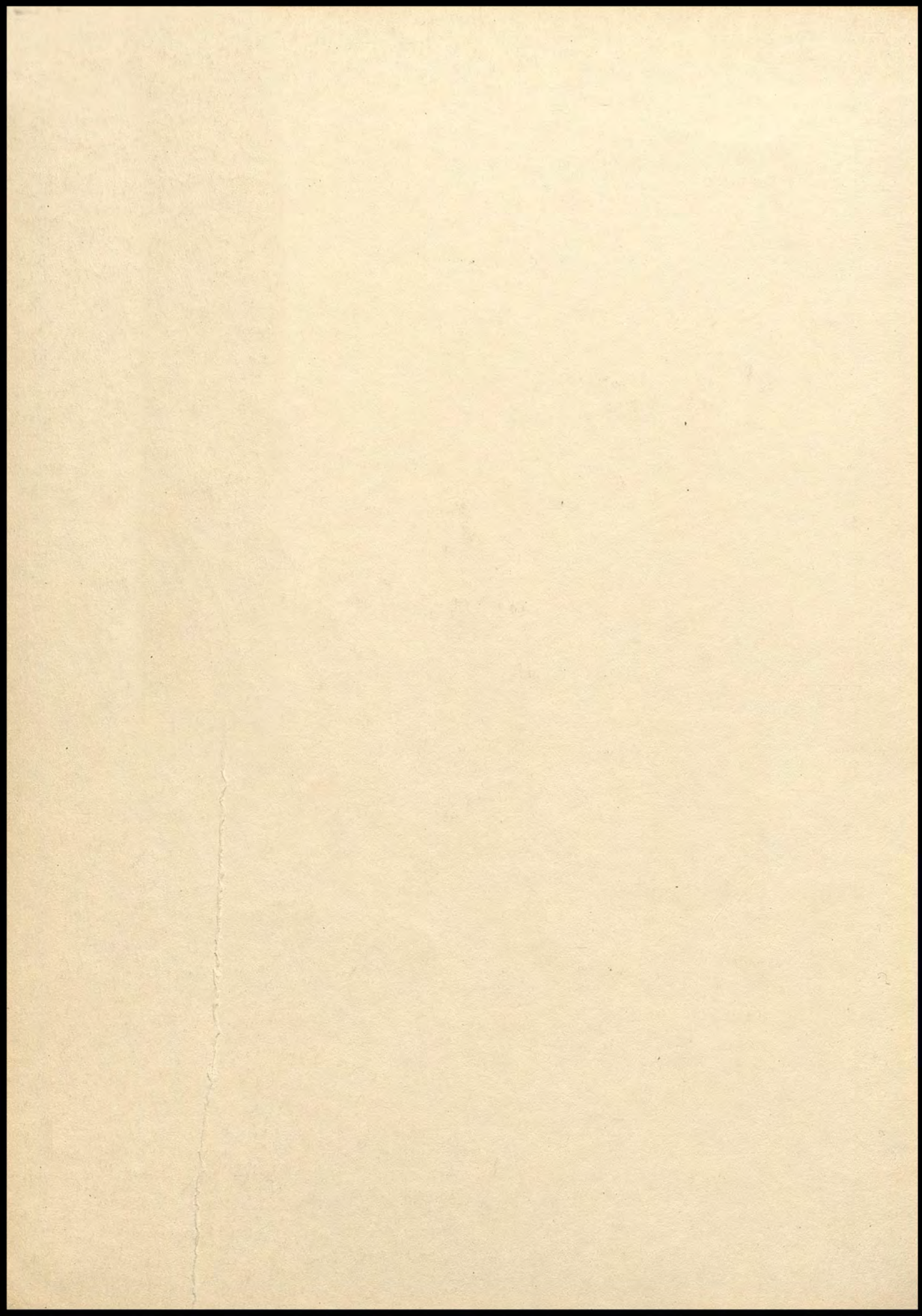


ROYAL BLUE

1937





**PAGE
MISSING**

**PAGE
MISSING**

Acknowledgments...

Editors...

LOIS ARMSTRONG
BURNADETTE McGUIRE

Advisor...

BERNICE SIMET

Engraving...

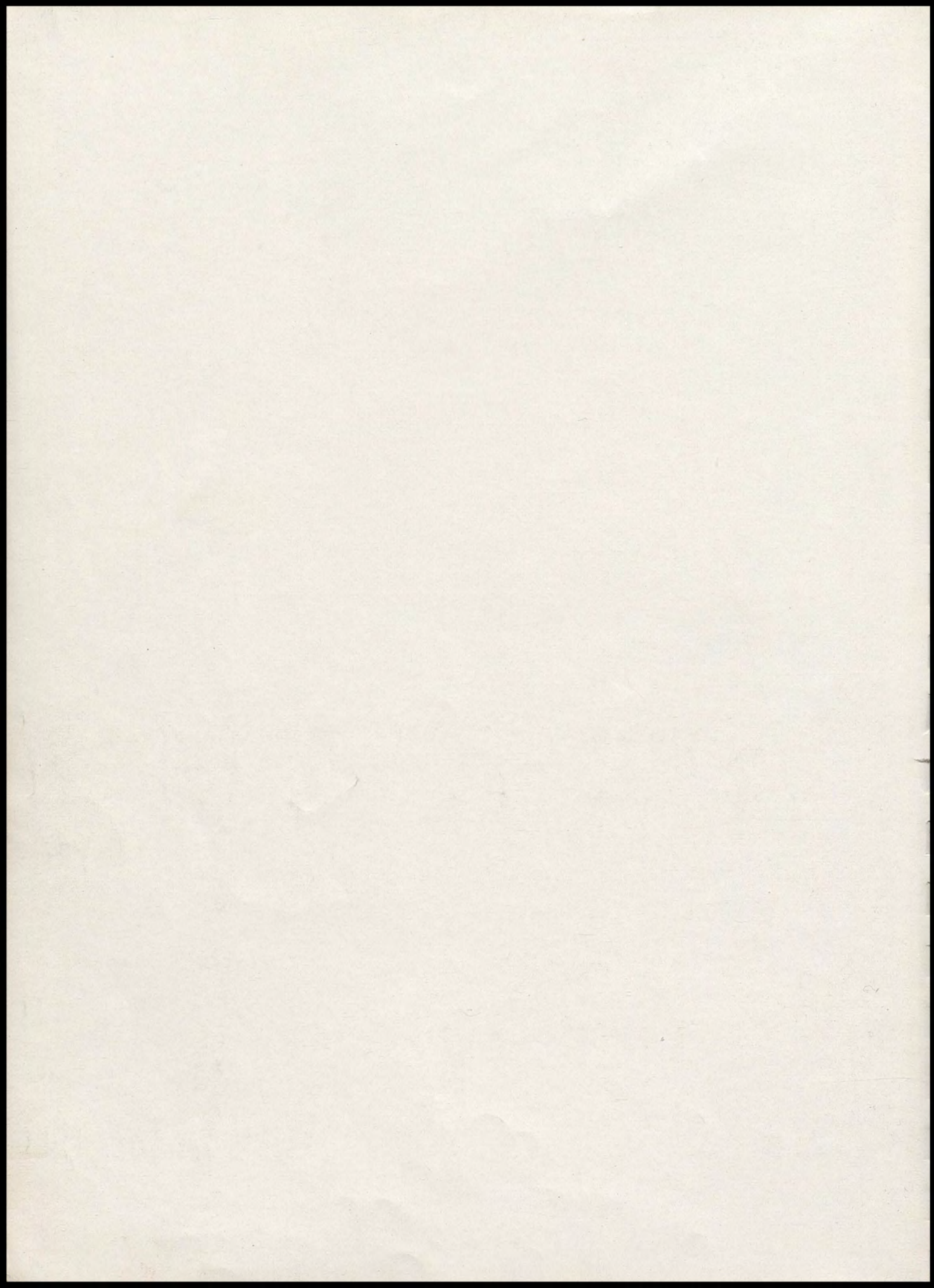
WESTERN ENGRAVING &
COLORTYPE CO., SEATTLE

Photography...

VITART STUDIO

Printing...

BULLETIN PRINTING CO.



ROYAL BLUE

PUBLISHED BY THE ASSOCIATED STUDENTS

of

WALLA WALLA HIGH SCHOOL

1937




Fall . . . Beginning



Winter . . . Continuing



Spring . . . Finishing



MARY ROBISON, Senior President and Round-Up Queen, pauses a moment on Senior landing.

Presenting...

A new ROYAL BLUE . . . This is a new age. Times are changing. New ideas have taken the place of the old. The ROYAL BLUE staff has broken away from the old traditions of dividing a book into many activity sections. We have arranged it according to the three seasons of the school year: fall, winter, and spring, with the hope that in later years the pages of this book will recall to you in orderly procession the events of the year 1936-1937.

Featuring...

Pictures of the faculty, student body officers, Girls' Federation, football heroes, JOURNAL staff, ROYAL BLUE staff, clubs, and snapshots—in the FALL section, which begins on page nine.

The new gym, girls' sports, "The Goose Hangs High," "The Importance of Being Earnest," the State Champions in basketball, "Joan of the Nancy Lee," the chorus and quartet, in the WINTER SECTION, which begins on page twenty-three.

The pictures of the graduating seniors, the underclassmen, the Wa-Hi R. O. T. C. cadet corps and sponsors, National Honor Society, second semester Girls' Federation officers, track men, intra-mural sports, snapshots, and many other activities, in the SPRING SECTION, which begins on page thirty-three.

IN THE LIBRARY students may be seen reading for instruction and recreation.





Congratulating . . .

State Champs! That is a title that makes anyone prick up his ears, and when that title belongs to one's own team—well, what would you think? And you are right, Coach Dimick's Blue Devils were good, and they really deserved to snatch the "bacon" fight from under the noses of 15 other tournament teams. A combined tight defense and quick-breaking offense brought them victories over 4 larger teams.

The cups in the foreground are trophies of the Blue Devil's success. The cup on the left is a rotation trophy, which goes each year to the first place winner of the tournament. An interesting feature of this cup is that Wa-Hi has their name engraved on the cup four times, while no other school has theirs on more than twice. The tall cup on the right is a permanent trophy which will be put in the trophy case in the new gym.

MR. LACEY

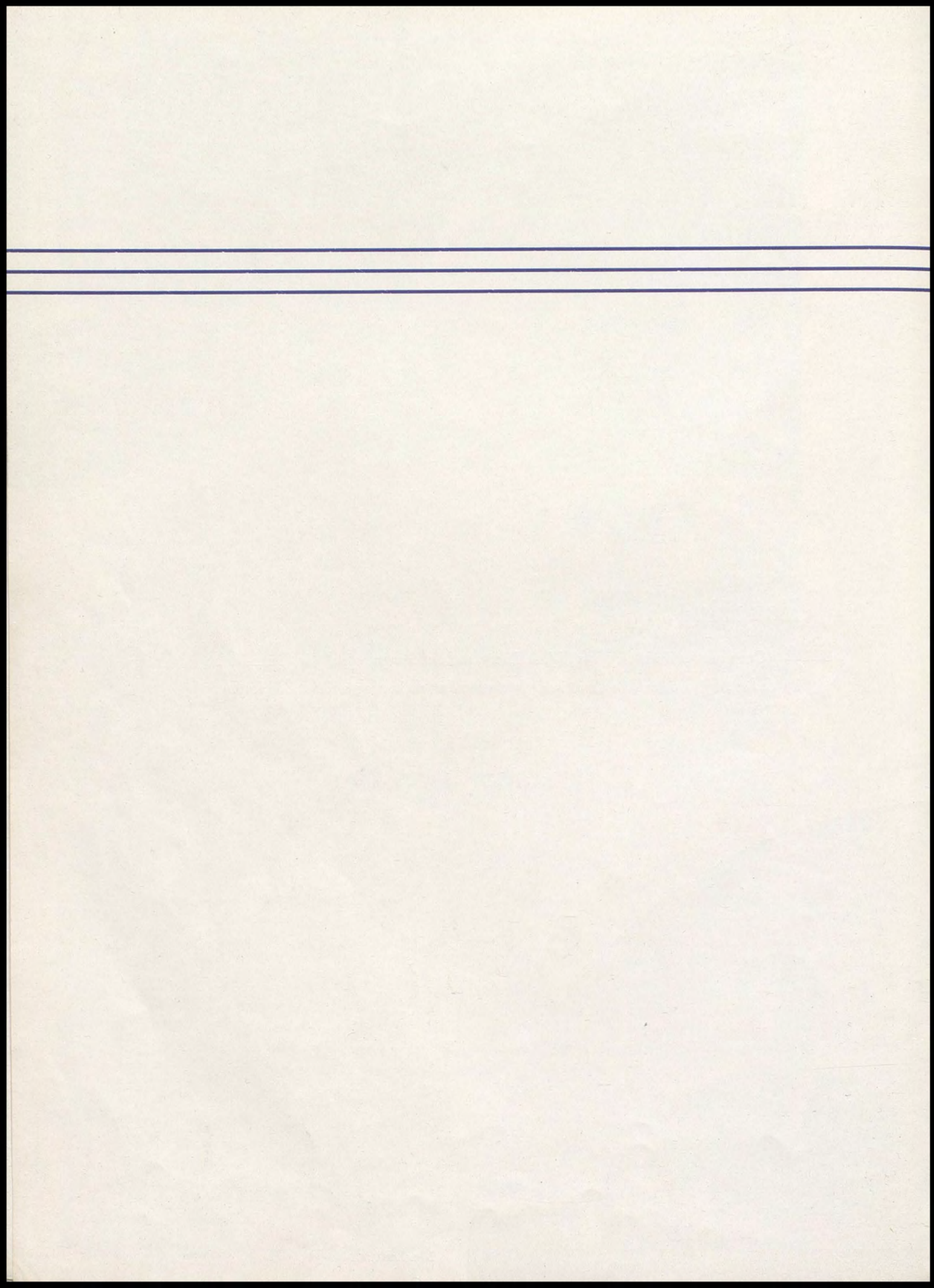


Honoring...

Our new superintendent, Mr. W. A. Lacey, and our new principal, Mr. Dean Lobaugh, by dedicating to them this book in appreciation for their progressive leadership.



MR. LOBAUGH



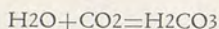


FALL

Livengeed



Industrialists



Brides to Be

Guiding...

Future

Captain Philip Allison, R. O. T. C. Instructor, Rifle Team Instructor, Fencing Instructor, Advisor Officers' Club; Paul "Polly" Anderson, General Science, Football Coach, Intra-Mural Director, Yell Staff Advisor; Mrs. Mabel Angell, French, Typing, World History, substitute for Miss Wuest first three quarters; B. E. Austin, History; Harrison Clark, Head of Commercial Department, Attendance Clerk, Advisor Senate Club.

Dessie Cox, English, Dramatics, Gimmel Teth Advisor; Marie Diedesch, Home Relations, Home Economics Club Advisor; Harold Dimick, Head of Physical Education Department, Basketball Coach, W. W. Club Advisor; Juliana Draper, History, Sophomore Class Advisor; Ruth Dunn, Mathematics, Senior Class Advisor.

Ralph Emigh, Mathematics, Instructor Wrestling Club; Helen Fabricius, Girls' Physical Education, Girls' Athletic Club Advisor; Myrtle Falk, English, Junior Class Advisor; Mabel Graham, Commercial; Fay Hamm, Head of the English Department.

Laurence Jacky, History, Journalism, Advisor Wa-Hi Journal; Virginia Idol, Music; Mrs. Alice Kenyon, Biology; Bess Kirk, Mathematics, Advisor Math Club.

Not shown in the picture are Dollie Corn, English; Esther Breiholz, History, Advisor of National Honor Society; Carolyn Bickelhaupt, English; Agnes Little, English and Commercial; Anne Wuest, French and Typing. Miss Wuest and Miss Bickelhaupt returned to Wa-Hi last semester after extended absences.



mers

Instructing...

Edith Krueger, Commercial; Lillian Lindner, English and Latin, Advisor Girls' Classical Club; Chester Lybecker, Agriculture, Advisor F. F. A. Club; Paul MacGown, English, Track Coach, Intra-Mural Coach; Helen McCormick, Commercial, Dean of Girls Second Semester, El Adrea Advisor First Semester.

Lucile McIntyre, Head of Foreign Language Department, Advisor of Equites; Sgt. Harold Mizony, Assistant Instructor of R. O. T. C., Aviation Club Advisor; Leonard Myers, Shop; Ivy C. Peterson, Director of Guidance; Gwendolyn Ramseur, Library.

Paul Reed, Chemistry, Assembly Advisor; Grace Sauers, Art; Bernice Simet, Commercial, Advisor ROYAL BLUE, El Adrea Advisor; C. A. Steelsmith, Mechanical Arts; Leila Sutherland, English.

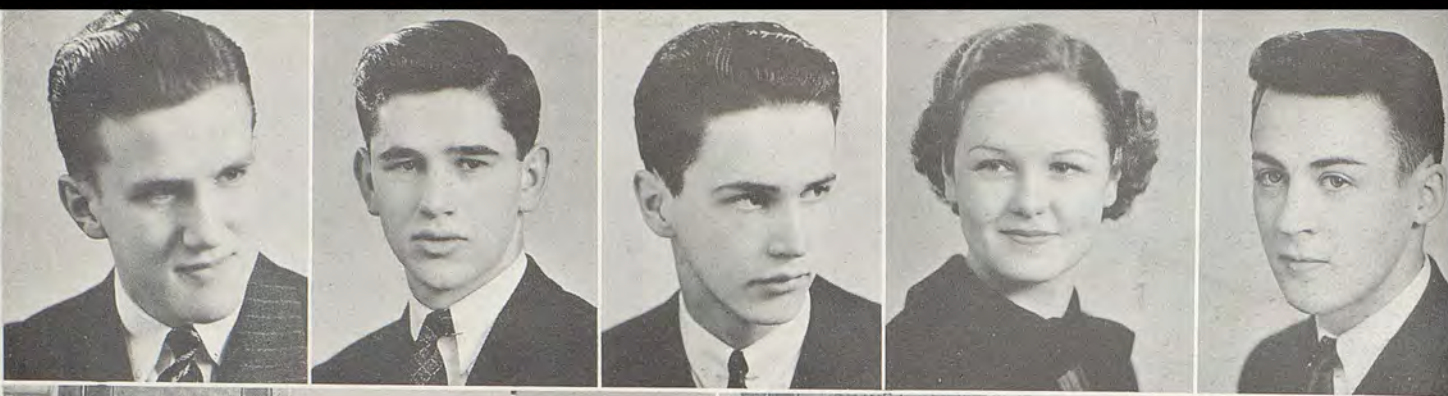
Alva Treadwell, Commercial; Wilma Wasser, German, French, World History, Advisor Der Lorelei Verein; Frances Yeomans, Head of Social Science Department; Martha Young, English, Dean of Girls First Semester.

Miss Young left to teach in Seattle the second semester, and was replaced as Dean by Miss McCormick. Miss Little took over some of the work formerly handled by Miss Young and Miss McCormick. Others not shown are Everett Goodwin, Mathematics, Instructor of the Boxing Club; B. A. Tack, Head of Science Department and Stagecraft manager; Mary K. Yates, General Science, Advisor of Freshman Class.

Eyes on your copy!

"The world's a stage."

Life's triangle.



Governing...

LaSalle LeRoux, President Clayton Shaw, Vice-President Stuart Miller, Secretary Jean Kennedy, Treasurer Norman Fulton, Chief Justice

Court...

Dorothy Jean Ludwigs, Junior member; Bob DeWitt, Sophomore member; Norman Fulton, Senior member and Chief Justice second semester; Dale Gentry, Senior member and Chief Justice first semester; Jeanne Crawford, Junior member; Ellen Bayne, Senior member; Martha Kennedy, Junior member; Billy Kibiy, Freshman runner.

Cabinet...

Around table, left to right—Dale Gentry, Commissioner of Justice, first semester; Keith Griffith, Commissioner of Inter-School Relations; Virgil Stram, Commissioner of Buildings and Grounds; LaSalle LeRoux, President; Elva Chamberlain, Commissioner of Organizations; Peggy Woodward, Commissioner of Assemblies; Jesse Cochran, Commissioner of Hallways.

Legislative Assembly

The student Body of Wa-Hi selected LaSalle LeRoux to lead them in 1936-37. Clayton Shaw, Vice-President; Stuart Miller, Secretary; and Jean Kennedy, Treasurer were chosen as other student body officers. . . . The Cabinet, selected by the President and ratified by the Legislative Assembly, has cooperated with the President in directing the student affairs. . . . The Student Court, under the direction of Chief Justices Dale Gentry and Norman Fulton, for student misdemeanors, prescribed penalties.

Two students selected from each of the thirty-six homerooms formed the Legislative Assembly. Under the leadership of the Student Body Vice-President, Clayton Shaw, questions of student policy were discussed and acted upon.

Wa-Hi has indeed developed a system of student government to which we can point with pride.



Directing Girls' Activities...

Miss Martha Young, Advisor Marilyn Maxey, President Ellen Bayne, Vice-President Lois Armstrong, Secretary Natalie Nascimento, Treasurer

Council...

Row 1—Virginia Harvey, Junior Representative, Secretary; Jessie Lou Davis, Junior Representative; Ruth Webb, Freshman Representative, Assistant Secretary; Barbara Chisholm, Sophomore Representative. Row 2—Edna Quist, Senior Representative, President; Jane Harold, Sophomore Representative, Vice-President; Betty Davis, Senior Representative; Donna Beth Thompson, Freshman Representative, Guard; Doris May Adams, Junior Member-at-Large.

Cabinet...

Row 1—Marilyn Maxey, President; Charlotte Loney, Assistant Dress Standards; Edna Quist, Dress Standards; Dorothy Livengood, Assistant Friendship; Peggy Woodward, Friendship; Barbara Lockhart, Assistant Finance; Lois Lane, Social. Row 2—Lois Armstrong, Secretary; Shirley Retzer, Assistant School Improvement; Marian Palmer, Freshman Representative; Betty Davis, Assistant Dramatics; Mary Robison, Finance; Ellen Bayne, Friendship. Row 3—Mary Florence Bendix, School Improvement; Dorothy Cox, Assistant Entertainment; Dorothy Davison, Entertainment; Patty Marum, Sophomore Representative. Row 4—Virginia Rice, Senior Representative; Ora Tate, Dramatics; Natalie Nascimento, Treasurer. Row 5—Barbara Woodward, Assistant Social; Dorothy Jean Ludwigs, Junior Representative.

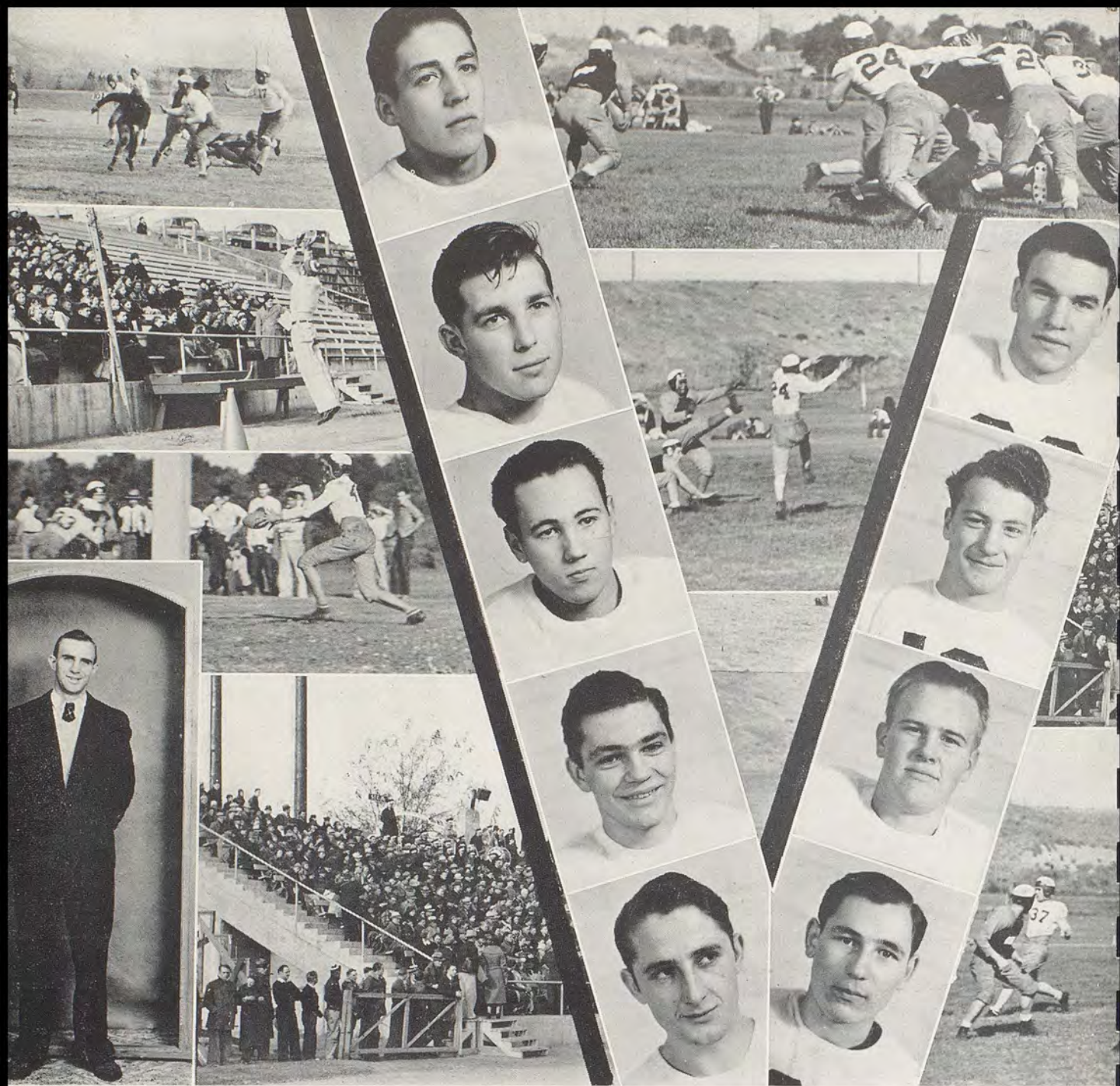
Big and Little Sister Committee; Dorothy Davison and Doris May Adams all dolled up for Centennial; Marilyn Maxey; Mary Florence Bendix and Virginia Harvey—pioneer gals; Edna Quist and Lois Lane; Prosser group.

Girls' Federation

The traditional Big and Little Sister Party, featuring a "baby" show, inaugurated another eventful year in Girls' Federation activity in Wa-Hi.

Important accomplishments of the Federation were the sponsorship of the Washington State Theatre in "No More Frontier" in November and the purchase of baskets for stage decoration, dishes for use in the new gym, and furnishings for the girls' lounge.

The close of the semester saw the departure of Miss Martha Young. She had been advisor, councilor, and friend to each girl in the organization.



Coach "Polly" Anderson, Fichtner, Frank, Owsley, Gorman, Schaeffer, Transeth, Ruther, E. Cochran, J. Cochran

The Wa-Hi 1936 team was small in weight, but they earned for themselves the name "the fightingest boys to wear the Blue Devil suits in a long time."

In the initial game, La Grande and Wa-Hi battled to a 0-0 tie. In the first home game the home team held the Everett Sea Gulls, who were rated three touchdowns better than the Blue Devils, to 14 points made on six successive passes.

MacLoughlin High and Wa-Hi fought a hard game, which ended in another 0-0 tie. Twice during the game Wa-Hi drove to Mac-Hi's 5-yard line, but lost the ball.

Wa-Hi made their first score of the season when they defeated Pasco 13-6. On the opening kickoff, John Gorman galloped 88 yards up the side line for a tally. Again in the second quarter he went across the final stripe on a 20-yard reverse.



Knobel, McKinney, Grange, Gentry, Martin, Merkle, Bogle, Bates, Benzel, Yell King Romine, Manager McCoy

On the trip to The Dalles, the Indigo Imps got revenge for their last year's defeat by trouncing their rivals 26 to 12. Wa-Hi trailed 12-7 at the half, but put over three scores in the last period.

At the Pendleton game, Wa-Hi made its debut under the new lighting system at the Stadium. It was a lucky night for the Blue Devils, and ended 29-7 in their favor.

Wa-Hi's second game under the artificial sun ended 7-0 in favor of Dayton.

The second defeat in a row was handed the Imps by the Lewiston Bengals, 12-7.

In the annual Thanksgiving Day game the Yakima Pirates beat Wa-Hi 14-7. The Blue Devils led 7-0 at the half, but a passing attack scored twice for the invaders.

We congratulate Coach "Polly" Anderson and the '36 team for their reputation as "scrappers," and their clean and sportsmanlike play.



Laurence Jacky, Advisor.

Robert Clodius, Editor.

Advertising Staff—Dare Chamberlain, Noyer, John Frankland, Fred Hastings.

Paul Olson, Edwin

Staff—Robert Clodius, Dare Chamberlain, Mary Robison, Ellen Bayne, Dorothy Jean Ludwigs, Laurence Jacky, Jessie Lou Davis, Evelyn Kelso, Cecil Johnson, Gordon McCoy, Doug Lemmel.

A Class in Journalism—Florence Henderson, Joan McMeekin, Adaire Flomer, Helen Howard, Elaine Webber, John Storie, Bill Craig, Barbara Roberts.

Publishing a Weekly Newspaper...Wa-Hi Journal

First Semester...

Editor, Robert Clodius; Associate Editor, Pat McCarthy; News Editor, Pat Cowan; Sports Editor, Gordon McCoy; Society, Helen Schiffman; Humor, Ellen Bayne; Advertising Manager, Jack Schell; Business Manager, Allan Drumheller; Exchange, Dare Chamberlain; Typists, Don Baird, Betty Bishop; Faculty Advisor, Laurence Jacky.

Second Semester...

Editor, Robert Clodius; Associate Editor, Doug Lemmel; News Editor, Gordon McCoy; Associate News Editor, Marjorie Mae Walker; Sports Editor, Cecil Johnson; Society, Dorothy Jean Ludwigs; Humor, Ellen Bayne; Advertising Manager, Dare Chamberlain; Business Manager, Allan Drumheller; Exchange, Mary Robison; Typists, Evelyn Kelso, Jessie Lou Davis; Faculty Advisor, Laurence Jacky.



Miss Simet

Lois Armstrong

Burnadette McGuire

Art Staff, Livengood, Miller, Bogart, Quist.

Marlen Dimick in inset.

Sales Staff, Lane, Miller, Loney, Bendix, Reed, Brown, Levin.

Editorial Staff, Roberts, McGuire, Miss Simet, Levin, Bendix, McKinney, Smootz, Hanger, Armstrong.

Editing An Annual The Royal Blue

Burnadette McGuire, Lois Armstrong	Co-Editors
Floyd Levin	Business Manager
Stuart Miller, Lois Lane	Assistants
Katherine Hanger	Student Activities and Organizations
Barbara Roberts	Music, Drama, and Girls' Sports
Ilene Smootz	Classes and Faculty
Mary Florence Bendix, LaSalle LeRoux	Snapshots
Jim McKinney	Military
Marlen Dimick	Sports

Art Staff

Edna Quist
Dorothy Livengood

Stuart Miller
Melvin Bogart

Sales Committee

Floyd Levin
Lois Armstrong
Lois Lane
Sarah Ellen Loney
Gareth Reed

Marlen Dimick
Stuart Miller
Iris Lyons
Mary Florence Bendix

Clubs . . .

Senate . . .

Gorman, Dimick, Hollaway, Allen, Kirkman, Hooper, Yeend, Miller, Keyes, Swauger, Thomas, Adams, Rogers, Craig, Kolb, Tarwater, Coyle, Sporleder, Mr. Clark, Advisor, Seitz, Dacres, Storie, Guenther, Gale, Cochran, Rogers, Jackson.

El Adrea . . .

Armstrong, McGuire, Overby, Appling, Loney, S. E., Adams, Melbye, Cram, Mardis, Haley, Shelton, Loney, C., Willaby, Quist, Taylor, Cox, Creelius, Bemus, Hanger, Jones, Anderson, Davis, Frazier, Robison, Bowers, Meiners, A., Meiners, D., Reynolds, Miss Simet, Advisor.

Gimmel Teth . . .

Bryant, Thomas, Renn, Kennedy, Chamberlain, Webb, Cowan, Maxey, M., Weatherman, Kennedy, J., Bean, Kennedy, M., Ramsay, Chisholm, Timm, Woodward, P., Woodward, B., Davison, Baker, Rehorn, Harvey, Marum, Harbert, Walker, Bayne, Robison, Crawford, Roberts, Maxey, A., Miss Cox, Advisor.

Equites . . .

Fisher, Neslin, Drumheller, Siverling, New, Campbell, Lyons, Freepons, Barnes, Robbins, Beeson, Nelson, Taylor, Transteth, Palmer, Miller, Harvey, Adams.

Girls' Classical Club . . .

Quesnell, Dickerson, Davis, Jacobs, Mitchell, Watson, Ball, Seitz, Hilbert, DeSmet, Coleman, Estes, Wamble.

Home Economics Club . . .

Mead, Gordon, Johnson, Alcorn, Hale, Lutton, Moore, Miss Diedesch, Advisor, Santo, Buroker, Weaver, Ashworth.

Math Club . . .

Lamberts, Ward, Ruther, Holwager, Fulker-son, Benefiel, Gibbons, Aylward, Watts, Oswald, Russel, Holtgreve, White, Krumbah, Woodward, Freeman, Levin, Boldman, Bel-lows, Pfaffle, Laurence.



German Club . . .

Foltz, Cline, Gettman, Fiewig, Kinsfather, Kinney, Wagner, Froese, Miss Wasser, Ad-visor, Hayes, Adams, Douglas, Jedin, Mc-Namara, Eby, Cunningham.



Aviation Club . . .

Miller, Kersch, LaRue, Michaelis, Crimmins, Clark, Simmonds, Eiffert, Shelton, Burton, Cornelius, Rogers, Mang, Anderson.



Officers Club . . .

Ruther, Beeson, Cauvel, McKinney, Coch-ran, J., McCoy, Mulhair, Thomson, Lloyd, Halliday, Kersch, Weber, Hart, Boldman, Mulkey, Woods, Argo, Harold, Dalton.



W.W. Club . . .

Yeend, Weber, Martin, Berry, Cochran, E., Gorman, Griffiths, Adams, Cochran, J., Seitz, Transeth, Keyes, Shaw, Grange, Weaver, Ruther.



F.F.A. . . .

Mueri, Tuke, Fausti, Ary, Shemwell, Reh-berg, McBain, Mr. Lybecker, Advisor, Bishop, Transeth, Russel, Hogben, McVain, Blom-gren, Eiffert, Lusk, Brown, Duff, Hurst, Sporfleder, Lyons, Alderman, Maxson, Lann-ing, Duncan, Jilg, Hector, Kibler, Rea, Miller, Criscola, Steadman.



S
e
e
n

A
r
o
u
n
d

S
c
h
o
o
l



The Long and Short of it

"Hi Teach"

Just think—our Prexy—and who?

Man about town

"Practice makes perfect"

Talking things over

Happy Champs

Smilin' through

In a hurry?

"Lucky dogs"

"Friends, Romans, and Country-men"

"Attention"

What's Seitz got?

Basketeers in Seattle

The lone Trumble

Chums

Conference goers

The Triad

"Digs by Doug"

"Polly and his gals"

S
e
e
n

A
r
o
u
n
d

S
c
h
o
o
l



One Alone

It's Still Being Done

A Rose Between Two Thorns

That Foolish Feeling

Upsy Daisy

Me and My Shadow

Two Together

One, Two, Buckle Your Shoe

Midget Transfer

My Little Buckaroo

One in a Million

We Can't Face It

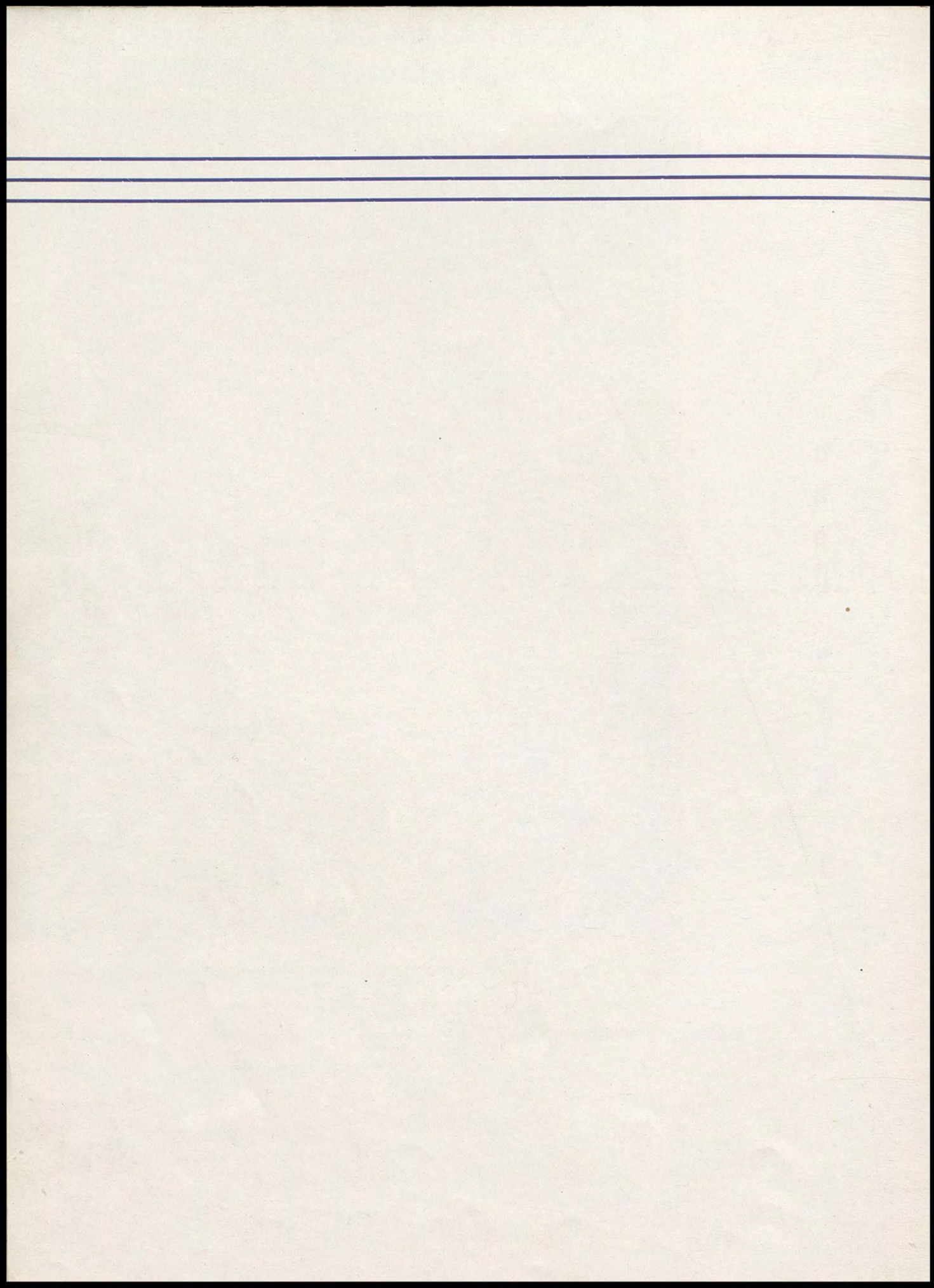
Blow, Gabriel, Blow

Call of the Wild

'Round and 'Round the
Mulberry Bush

Double Trouble

Buddies





WINTER



Adams

Seitz

Coach Dimick

Gentry

Shaw

Weaver

Keyes

"B" Squad—Billy Zier, Solomon Frank, Norman Transeth, Jack Jackson, Coach "Polly" Anderson, Ralph Estes, Dean Rogers, Harold Benzel, Marlen Dimick.

Winning

This year's team suffered only six defeats out of thirty-two games, and then more than made up for their losses by winning the State Championship. They played a good brand of ball all season, but it was not until the Hoquiam-Bremerton trip near the end of the season that they really began to show championship form. Then, after the sub-district and district tournaments, in which they won handily, the Blue Devils went to the state tourney in top shape and with a will to win which brought them out on top.

Ball-hawkers of the championship team were: Clayton Shaw, All-State forward, captain, and the most dependable shot; Jimmy Seitz, forward, a dead-eye at long, looping shots; Keith Griffiths, steady and dependable guard; Billy Weber, cool and shifty guard, with a good one-hand shot; Charles Weaver, All-State guard, also center, with long, lanky arms; Paul Yeend, smallest but shiftest one on the team, good at intercepting passes; John Adams, southpaw forward, and exceedingly hard to guard; Don Keyes, center, whose bewildered look catches opponents completely off balance; and Wayne Berry, a cool-working and steady guard.

Two other members of the team who did not go to the tournament were Dale Gentry, tall, point-getting center, who graduated mid-year, and Don Brumbach, sophomore center.



Billy Weber

Wayne Berry

"Polly" Yeend

Keith Griffiths

An Exciting Moment in the Everett Game

Freshman Team: John Cameron, Bob DeWitt, Bleakney Bishop, Dick Schick, Coach Paul MacGown, Jack McMann, Frank O'Dell, Curtis Bowers, Eugene O'Brien

Basketball Scores

Wa-Hi	Opponents	Date	Score	Date	Score	Date
52	Prescott	18	Dec. 5	25	Yakima	27 Jan. 30
56	Kennewick	21	Dec. 11	18	Mac-Hi	20 Feb. 2
41	Dayton	21	Dec. 12	25	Dayton	27 Feb. 11
23	Pasco	11	Dec. 16	38	Lewiston	17 Feb. 13
34	Hoquiam	26	Dec. 18	34	Hoquiam	42 Feb. 19
20	Hoquiam	21	Dec. 19	37	Bremerton	34 Feb. 20
63	Pomeroy	30	Dec. 22	Sub-District Tournament		
39	Yakima	26	Dec. 26	65	Clarkston	11 Feb. 26
32	Lewis & Clark	22	Dec. 29	40	Dayton	36 Feb. 27
37	Kennewick	13	Jan. 2	District Tournament		
73	Pasco	16	Jan. 2	34	Colfax	21 Mar. 5
24	Mac-Hi	25	Jan. 5	46	Dayton	29 Mar. 6
32	Washington Hi	20	Jan. 9	State Tournament		
44	Lewiston	24	Jan. 14	41	Castle Rock	29 Mar. 17
46	Clarkston	15	Jan. 15	35	Anacortes	26 Mar. 18
38	Pomeroy	22	Jan. 16	39	Wenatchee	35 Mar. 19
45	Everett	27	Jan. 22	40	Everett	32 Mar. 20
45	Prescott	17	Jan. 23			



Wa-Hi's Trophies
The Gym is Dedicated

The Realization of the Dream
The Rooting Section at Any Game

Dreams Come True

The new Wa-Hi gym, dedicated and opened for use last December, has many new and convenient features which are outstanding in themselves. The gym has two hardwood courts, the larger for the boys, and on which the varsity games are played. The boys' floor has six adjustable baskets, and can be fixed so the floor is regulation college size. For the spectators' benefit an electric scoreboard is used. The girls' floor is separated from the main floor by sound-proof folding doors, and has lines for shuffleboard, badminton, and basketball. The girls' lounge room has been tastefully furnished by the Girls Federation, and contains a ping pong table. The basement has showers, lockers, and equipment rooms. There is a room for boxing and wrestling, and a large classroom for the health and physical education classes.

The gym was built for community interests, too. The bleacher's seating capacity is 1600, and the boys' floor may be covered with folding chairs, and the girls' gym used for a stage. To the side of the girls' gym is a large, modern kitchenette for use at banquets. Other features are the large lobby, with its trophy cases, and special sliding compartments for folding chairs.

The students of Wa-Hi are justly proud of the new gym, the fulfilment of a dream of many years among sports enthusiasts of Walla Walla.



Girls' Rifle Team . . .

Gibbons, Wells, Bayne, Robison, Holtgreve, Quist, Snider, Quesnell, Harbert, Hopper, Tash, Chisholm, Davison, Adams, Hunnex, Aylward, Wendler, Roberts, Davis, Marum, Renn.

Tumblers . . .

Shuffleboard Match . . .

Hunt, Carter, Howard, Shinbo.

Homeroom 37 Basketball Champs . . .

Fiewig, Lammerts, Perkins, Allard, Beatty, Hergert, Oswald, Lang, Wamble.

Relay . . .

Homeroom 21 Volleyball Champs . . .

Benefiel, Gilliam, Rueble, Stoller, Miller, Daggett, McLachlan, McNamara, Smith.

A Game of Pingpong . . .

Dorothy Rice, Sally Schreiner.

In the Office . . .

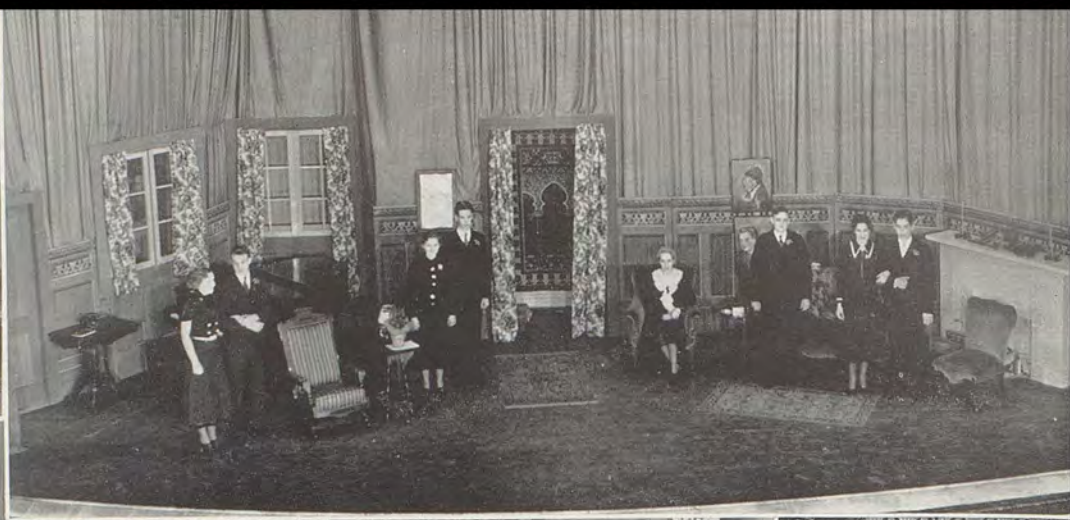
Helen Lambert, Miss Fabricius.

Girls' Sports

Intramural play has been one of the major projects of the girls' gym classes this year, with Sophomores and Freshmen participating. Twenty-two homerooms took part in intramural play, with 37 winning the basketball tournament and 21 the volleyball competition.

In individual tournaments Marian Palmer won the ping pong games, with Lois Gray runnerup. Helen Lambert and Edith Zier won the partner volleyball games; Bernice Frere and Donna Oliver were winners of the shuffleboard contest.

During the year the girls organized a Girls' Athletic Club, under the direction of Miss Fabricius. Its purpose is to further the interest of girls' sports in Wa-Hi, to help improve school spirit, to aid in assisting officials in tournaments, and to improve the skill of the members. Officers are: Helen Lambert, President; Mathilda Rueble, Vice-President; Doris Boldman, Secretary-Treasurer; and Faye Rueble, Reporter.



Dorothy Jean Ludwigs, Curtis Bates, Helen Coleman, Martin Crimmins, Maxine Hilbert, Eldon Drennan, Marian Palmer, Orville McCarroll, Pauline Prutsman, as Julia Murdoch, the critical aunt, not shown in the picture.

Orville McCarroll, Doug Lemmel as Elliot Kimberly.

Miss Katherine McDonnell, Coach

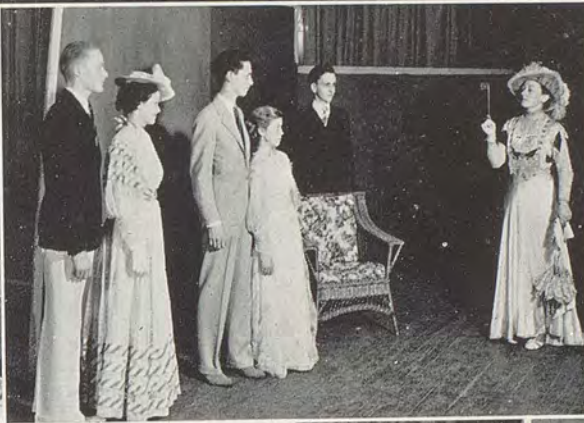
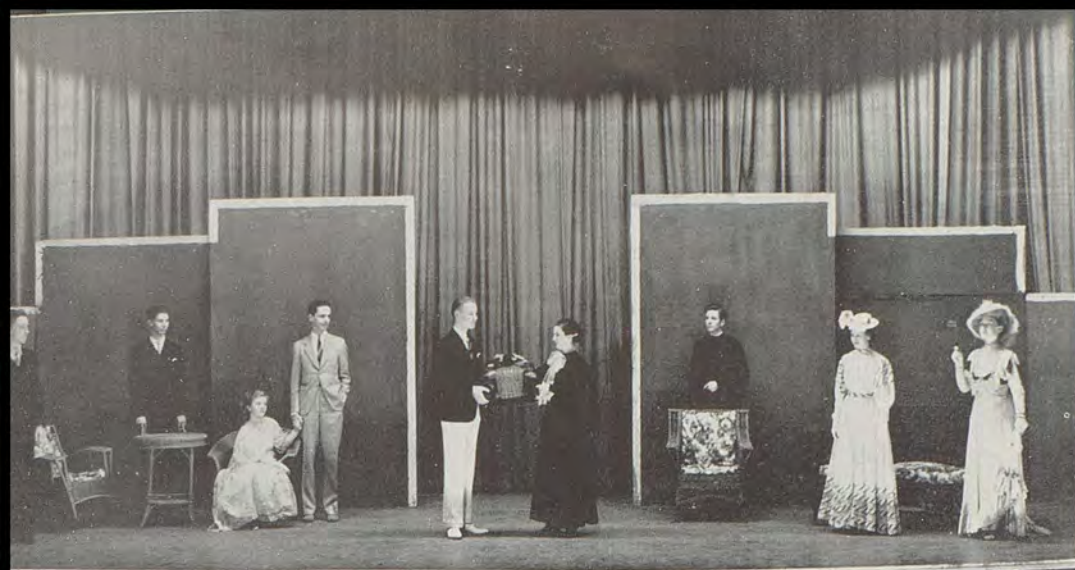
Dorothy Jean Ludwigs and Curtis Bates, as Dagmar Carroli, and Hugh Ingals.

Marian Palmer as Mrs. Ingals, France Lawrence as Leo Day, Orville McCarroll as Mr. Ingals, and Eldon Drennan as Noel Derby.

Top, standing—Dorothea Foltz as Rhoda, the maid, Helen Coleman and Martin Crimmins as Lois and Bradley, twins in the Ingals family, Maxine Hilbert as Grandmother Bradley. Bottom, kneeling—Orville McCarroll, Father Ingals, Sterling LeRoux as Ronald Murdoch, and Curtis Bates as Hugh.

"The Goose Hangs High"

Under the capable direction of Miss Katherine McDonnell, a competent cast of Wa-Hi students presented "The Goose Hangs High," a comedy drama by Lewis Beach, depicting the life of an American family. The mother and father thoroughly spoil their children, and sacrifice their fortune for them. This is the amusing tale of how the children, aided by their grandmother, work out their future.



Melvin Bogart as an English butler; Verrold Maestretta as a butler; Lois Armstrong as Cecily; Stuart Miller as Algernon; Floyd Levin as Earnest; Charlotte Loney as Miss Prism; Clair Mulkey as Dr. Chasuble; Jean Kennedy as Gwendolyn; Elizabeth Davis as Lady Bracknell.

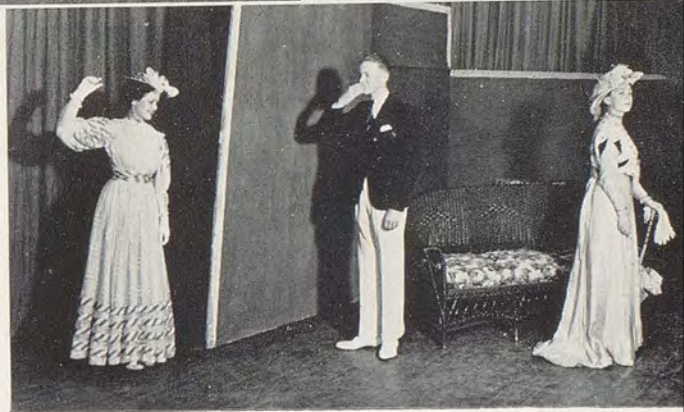
Earnest proposes to Gwendolyn.

"What does this mean?"

"Greetings, Dr. Chasuble."

A perfect reconciliation.

"Gwendolyn, the carriage is waiting."



"The Importance of Being Earnest"

Again directed by Miss Catherine McDonnell, a cast of Senior students presented to an appreciative audience the Senior Class play, "The Importance of Being Earnest", by Oscar Wilde. The comedy, which greatly amused the audience with its caustic humor and confused situations, concerned a non-existent Mr. Earnest Worthing, two pretenders to his name, two ladies engaged to them, Lady Bracknell, whose business was directing people's lives, and Miss Prism, whose dignified love affair with the Reverend Dr. Chasuble was conducted quite primly and properly. A happy finale found all the couples happily united under Lady Bracknell's begrudging approval.



Bette Pittock and Lee Mantz, Jr., as Joan and Captain Dick.

Pirate Dancers

The Pirates

"Golden Dawn"

Sutherland, Dix, on stairs. Ruther, Fuller, LeRoux, Lane, Lemmel, Prutsman.

Virginia Idol, Director

"Double" trouble. Keith Griffiths, Aline Reynolds and Marian Taylor, as the twin bridesmaids, and Sherwood Palmer.

Singing Pirates and "Pirettes"

Colorful costumes and well executed stagecraft enhanced the operetta "Joan of the Nancy Lee," by Agnes E. Peterson and Louis W. Curtis, presented March 12 and 13. Under the direction of Miss Idol the orchestra and entire cast gave forth musical and dramatic talent that blended harmoniously to give an evening's entertainment. The plot was one that had both comedy and near-tragedy, with everything turning out happily for all concerned. Miss Helen McCormick assisted in directing. The boys' and girls' chorus classes sang. Leads were taken by Bette Pittock, Lee Mantz, Jr., William Ruther, Nancy Pratt, Stirling LeRoux, Jack DeMaris, Keith Griffiths, Sherwood Palmer, Doug Lemmel, Aline Reynolds, Marian Taylor, Pauline Prutsman, Dorothy Fuller, Lois Lane, Alberta Garrett, John Sutherland, Howard Dix and Robert Jones.



Christmas Carolers

Girls' Chorus

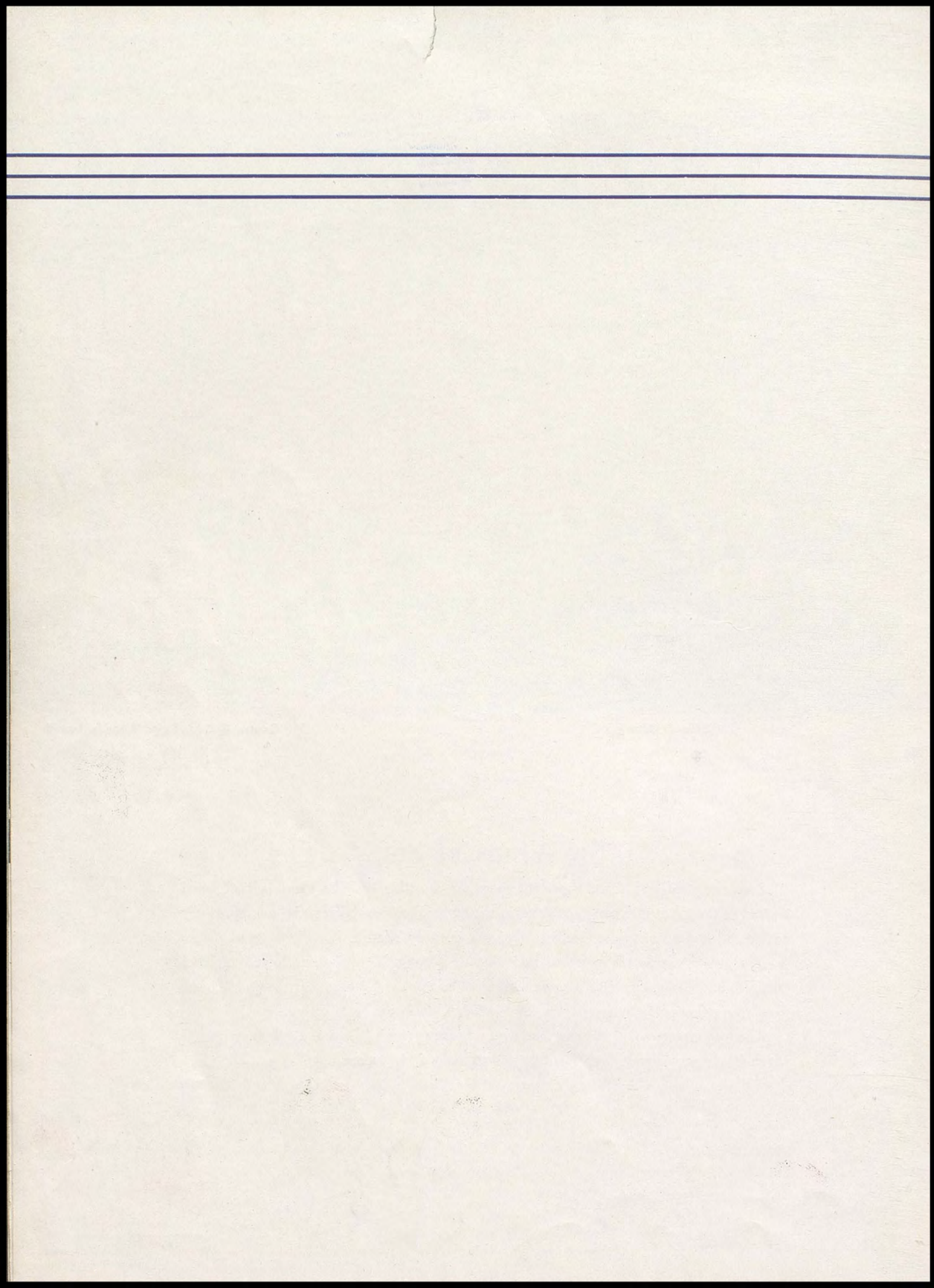
Quartet: Griffiths, Taylor, Reynolds, Lemmel

"On Wings of Song"

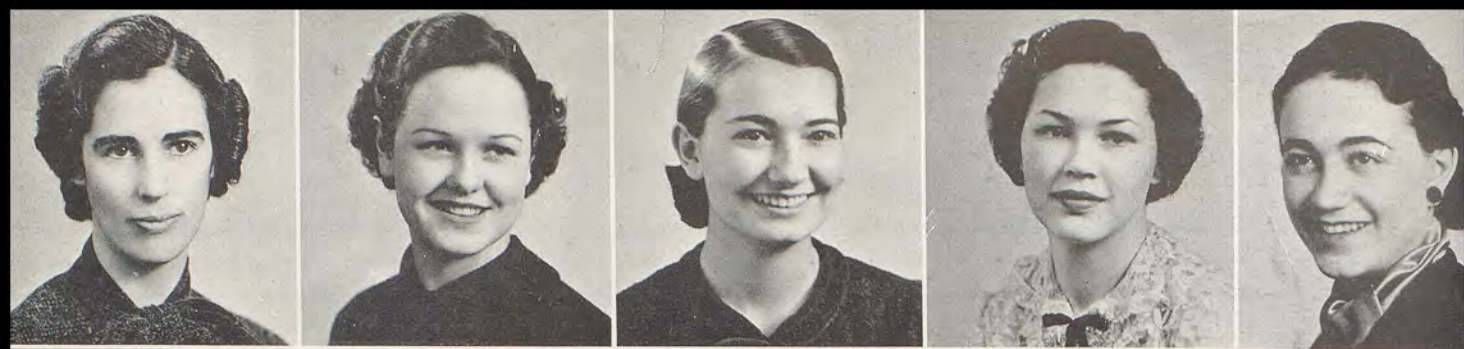
Both the girls' and mixed choruses, under the direction of Miss Virginia Idol, participated in the Christmas program given in the auditorium just before the holiday. Everyone agreed it was one of the loveliest programs given by Wa-Hi.

The mixed quartet composed of the voices of Marion Taylor, Aline Reynolds, Keith Griffiths, and Doug Lemmel, sang at various times during the year and the girls' chorus gave a very fine performance before the Kiwanis Club in the early spring.

The major program of the chorus classes was the operetta "Joan of the Nancy Lee" in which all chorusters participated and helped to make a big success.







Miss Helen McCormick, Advisor

Jean Kennedy, President

Lois Lane, Secretary

Martha Kennedy, Treasurer

Aline Reynolds, Vice-President

Cabinet...

Charlotte Loney, Social; Doris May Adams, Assistant Social; Edna Quist, Senior Class Representative; Ruth Melbye, Assistant Entertainment; Ellen Bayne, Friendship; Dorothy Ramsay, Entertainment; Jean Kennedy, President; Shirley Retzer, School Improvement; Marjorie Cochran, Assistant Dramatics; Aline Reynolds, Vice-President; Marilyn Maxey, Past President; Virginia Harvey, Assistant Friendship; Dorothy Jean Ludwigs, Finance; Elizabeth Davis, Dramatics; Lois Lane, Secretary.

Council...

Peggy Woodward, President, Senior Member; Peggy Renn, Senior Member, Vice-President; Virginia Harvey, Junior Member, Secretary; Maxine Courtney, Junior Member; Myrna Cation, Freshman Member; Edna Quist, Member-at-Large; June Wamble, Sophomore Member; Jeanne Wooton, Sophomore Member; Burnadette McGuire, Senior Member, Runner—Alice Garrett, Guard; not in picture.

Girls' Federation

In an impressive installment service on February 8 the retiring officers of the Girls' Federation turned their duties over to the new officers. The new Dean of Girls, Miss Helen McCormick, was introduced at this time.

At the "Big and Little Sister" party, the "sisters" danced to the rhythm of the Swing Band in the new gym.

In March the Federation sponsored another play by the Washington State Theatre, "No More Frontier." Jean Kennedy, Mary Florence Bendix, Lois Armstrong, and Marilyn Maxey were in charge of the tickets and publicity.

In April, Jean Kennedy, Ellen Bayne, Charlotte Loney, Marilyn Maxey, Peggy Woodward, Jeanne Crawford, Ruth Melbye, Martha Kennedy, Lois Armstrong, and Dorothy Ramsay, accompanied by Miss Helen McCormick, went to Yakima for the Tri-State Conference.

Among the outstanding assemblies given during the semester was the play "Turn of the Hair," given by the dramatics department of the Federation.

The spirit of cooperation which determines the success of the Girls' Federation activity during each successive year, has been very evident during the year 1936-37.



At Work and Play

Military Women

The Gang

Waiting

"Heads or tails"

Back to school

In the lockup

Pausing to pose

That hat again!

"Two Eds. are better than one"

A fair young miss

"You tell 'em, Coach"

"Miss Personality"

"Me and my dog"

What were their ancestors? The man behind the scenes

To work again

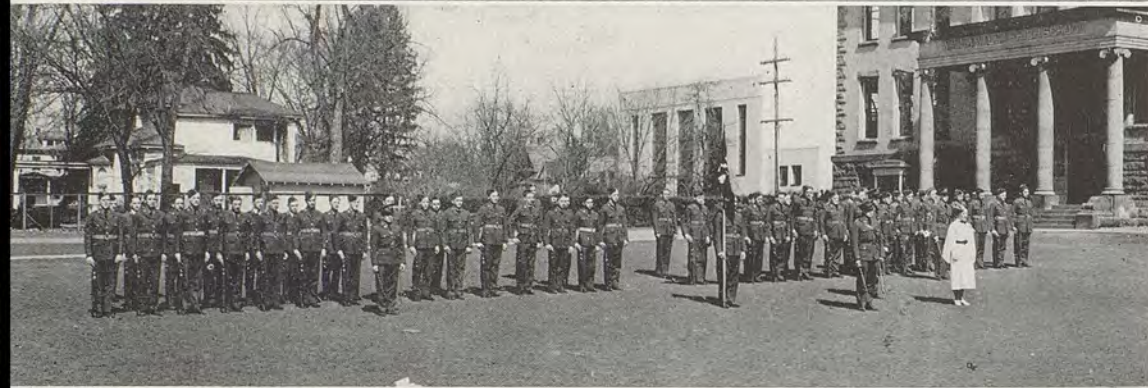
Leap Frog

Dreams?

Watching the world go by



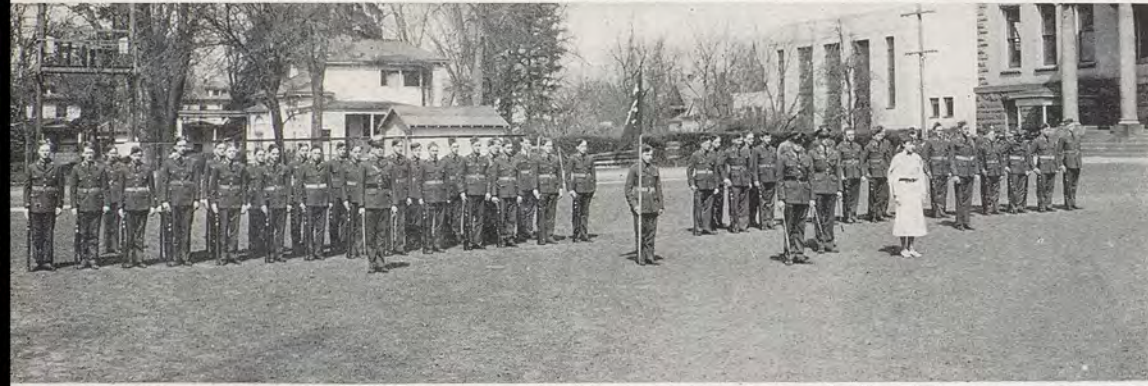
Band



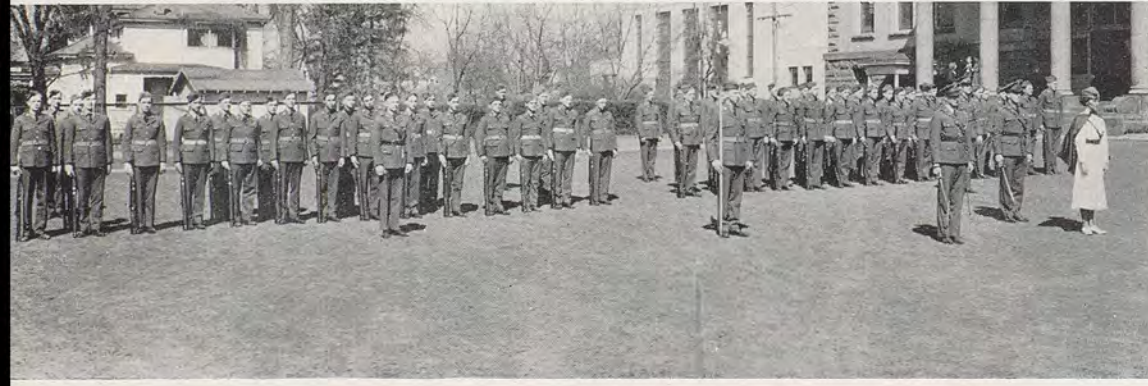
Company A



Company B



Company C



Company D

Sponsors...

Captain Ellen Bayne in foreground.



Rifle Team...

Steel, Johnston, Mulkey, Davison, Cauvel, Wells, Piper, Dalton, Spencer, Ruther, Beeson, Halliday, Burnett, Woods.



Regimental Staff...

Woods, Major Cauvel, Lt. Col. McKinney, Capt. Cochran, Lt. Dalton, Lt. Mulhair, Sgt. Major Martin, Staff Sgt. Riggs.

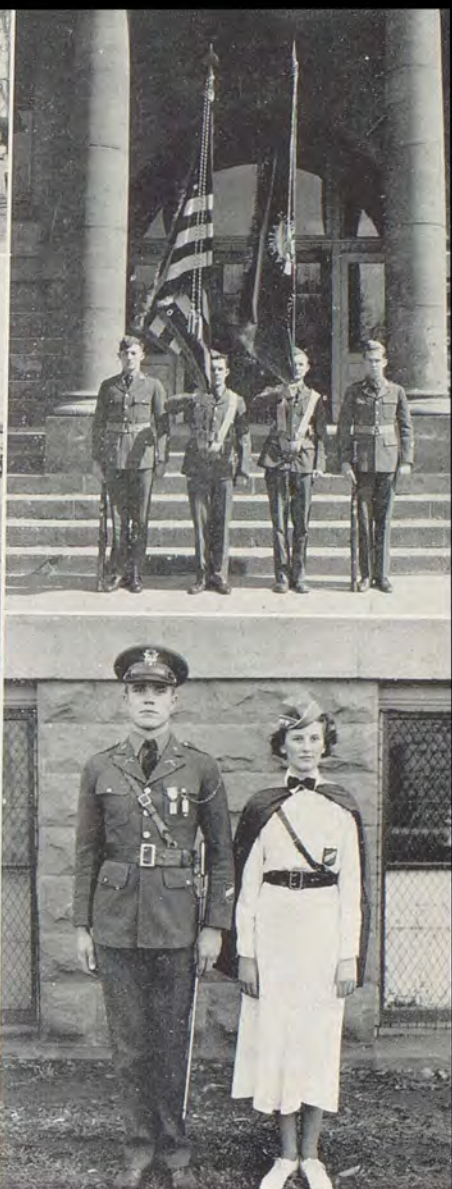


Colors...

Pierce, Martin, Riggs, Overturf



Lt. Col. McKinney, Capt. Bayne



R. O. T. C. Doings...

Changes in the Wa-Hi R. O. T. C. unit were wrought by Captain P. W. Allison, who became instructor of the unit in September. A new company of sponsors was formed, and the corps was formed into a battalion of four companies with a Lt. Col. as battalion commander. Jim McKinney was appointed to this position.

The sponsors, besides adding color and charm to the military parades and reviews, help at school functions by ushering at games and programs, and performing other services.

The Federal inspection this year was a real success, with the whole corps putting in a great deal of spirit and clock-like precision in their drill, and earning the praise of Lt. Col. Stillwell, the Federal inspector.

Company B, commanded by Captain George Reiter, received the cup for being the best company. Company A was praised for its creditable showing in extended order drill, and Companies C and D were commended for close order drill.



Fencing Squad . . .

Front row: Katherine Hanger, Barbara Roberts, Peggy Weatherman. Back row: Sherwood Palmer, Capt. Allison, Coach; Lyman Cauvel.



Yell Staff . . .

Yell King Alan Romine, Advisor Paul Anderson, Robert Reid, "Pug" Swanson with megaphone.



Stock and Potato Judging Team . . .

Harold Bishop, Jack Duncan, LeRoy Lusk, Mr. Lybecker.



Eh-Kah-Nam Contestants . . .

Bill Martin, James Brown, Stuart Miller, Betty Jean Gottlieb.

Under the excellent direction of Captain P. W. Allison, a former Olympic star, a fencing squad was formed at Wa-Hi last fall. Members learned the fundamentals of fencing, lunges, parries, repostes, engages, etc. Exhibitions have been given before the Kiwanis and Rotary Clubs, as well as the school assembly. Although this squad is new and inexperienced, it has made remarkable progress and is looking forward to another successful year.

LeRoy Lusk, Harold Bishop, and Jack Duncan of the Stock Judging Team, competed in the Pacific International Live Stock Show at Portland, placing third. The Potato Judging Team, made up of Clarence Swanson, LeRoy Lusk, and Harold Bishop, placed sixth at the Spokane Potato Show.

The Eh-Kah-Nam cup, given annually to the outstanding extemporaneous speaker in the student body, was presented by James Brown, master of ceremonies, to Stuart Miller, competing in the finals with Bill Martin and Betty Jean Gottlieb.

The Yell Staff, organized to promote better spirit at games and pep assemblies, was directed by Alan Romine, Yell Leader, and his assistants, Robert Reid and Leland Swanson. One of their accomplishments was the organization and training of a special roter section for games.



Clark Amen
Betty Flaiz

Norma Ball
Howard Henderson

Catharine Cates
Dorothy Livengood

Lyman Cauvel
Charlotte Loney

Jesse Cochran
Marilyn Maxey

Elizabeth Davis
Stuart Miller

Edna Quist

Aline Reynolds

Ilene Smootz

Ora Tate

Ethel Weaver

Kathleen West

Peggy Woodward

Excelling

The members of the Walla Walla High School Chapter of the National Honor Society belong, scholastically, to the upper five per cent of the senior class. The membership selection for this organization is made in the spring and fall of each year, and is based upon scholarship, leadership, personality, and character. The new members are announced yearly in the spring at the National Honor Society assembly. Members selected in the spring of 1937, too late to be in the picture, were Floyd Levin, Edythe Githens, Gladys Buroker, Donald Adams, Bob Miller, Betty Barbee, and Iris Lyons, Seniors; Shirley Retzer, Marion Quesnell, Lester Merklin, Lena Watson, Robert Clodius, Jeanne Crawford, Ruth Davis, Dorothy Davison, Dorothea Foltz, Gordon McCoy, and Irene Bury, Juniors.



Keyes, Levin, Wallace, Romine.

Transeth, javelin

Rea, shotput

Front row: Harry Benzel, Elmer Levin, Harley Michaelis, Don Keyes, Dean Rogers, Marlen Dimick. Back row: Coach MacGown, Kenneth Smith, Alan Romine, John Rea, Charles Weaver, James Wallace, Norman Transeth, Manager George Romine.

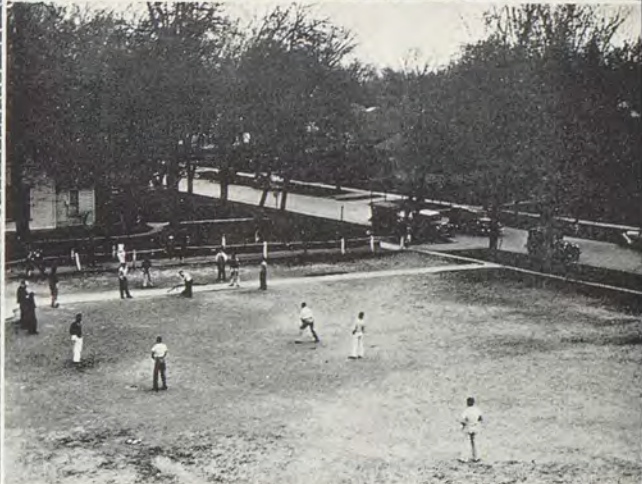
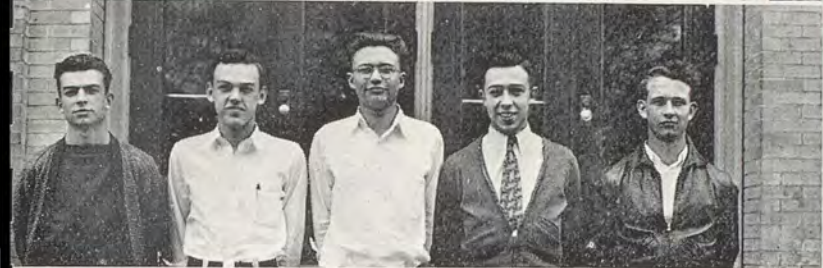
Benzel, discus

Track

Coach Paul MacGown had the task this year of assembling a track squad with very few experienced boys. However, he discovered some boys, who, after being whipped into shape, showed good form, and gave promise of a successful future.

Wa-Hi had a heavy track schedule this year, in which the boys did well, and showed great improvement each time. The season consisted of quadrangular meets at Pasco, Dayton, and Waitsburg, and meets with 10 or more teams at Ritzville, Mac-Hi, and the Sub-district and District meets.

The events and those who took part in them were: dashes—Martin, Levin, and Michaelis; javelin and high jump—Rogers, Keyes, and Benzel; low hurdles—Michaelis and Dimick; shot put—Ray and Transeth; 880 and mile—Bill Zier; pole vault—Dimick and Breeze; discus—Transeth, Romine and Benzel; broad jump—Keyes and Michaelis; relay—Martin, Levin, Dimick, and Michaelis.



Touch Football All-Stars . . .

Hurst, Hartwig, Hastings, Cameron, DeWitt, Anderson, Dummler, Weaver, Boldman.

Homeroom 40 Basketball Champs . . .

Yeend, Woods, Mulkey, Barnes, Lusk, Jones, Beale, D., Beeson, Hunt, Alderman, Beale, C.

Homeroom 3 Touch Football Champs . . .

Hartwig, Robbins, Douglas, Jantz, Hastings. Not in picture: Zier, Griffiths, VanDonge, Woods.

Horseshoes . . .

Softball . . .

Intramural Sports

Intramural sports, which are designed to provide fun and exercise for those who do not turn out for varsity competition, were directed by Paul MacGown the first semester and "Polly" Anderson the second semester. A schedule of homeroom competition in touch football, basketball, volleyball, softball, horseshoes, and ping pong were features of the year's program.

A system of points, by which each homeroom got points according to their place in competition and the number of persons participating, gave Homeroom 3 winning honors for the second consecutive year.

The two big events of the intramural year were: Mac-Hi Day, in which six schools competed in a program of boxing, wrestling, basketball, volleyball, and ping pong, Wa-Hi placing second; and Yakima Play Day, held at Yakima this year, in which the two schools took part in golf, horseshoes, basketball, touch football, ping pong, tennis, and softball. The score of this annual event was Wa-Hi 78, Yakiman 90.

Homeroom Typing, 9a . . .

Walters, Rice, Hunt, Johnston, Gould, Parsons, B. Parsons, M. E., McBain, Chernis, Palmer, Russell, Webb, Schreiner, German, Gross, Costello, Ballard, Simpson, Struthers, Lepaine, Chase.

Homeroom 13, 9a . . .

McLain, Schreider, Klein, Dimmick, Gottwig, Cates, Wooton, Botfany, Hutsell, Perica, Telford, Darnell, Beale, Barbuto, Slater, Wendt, Perry, Rogers, White, Duff, Wells, McLoughlin, Johnson.

Homeroom 5, 9a . . .

Goodman, Wilson, Stewart, Jauslin, Rader, Roberts, McDonald, McFall, Shenwell, Haigh, Barney, Fields, Leeper, Johnson, Peterson, Schaub, Durck, Woods, Russell, Kinsfather, Coyle.

Homeroom 34, 9a . . .

Janshaw, Shaw, Clifton, Miller, Swenson, Burgess, Coleman, Swanson, Fulton, Gallaher, Harvey, Howard, Morris, Lindstrom, Taylor, Gray, Taylor, Sandahl, Miauri, Salmeier, Goble, Butherus, Harbert, Miller, Kenyon, Sherwood, Moore, Culver, Falbo.

Homeroom 8, 9a . . .

Prutsman, Glover, Fullerton, Leonard, Ritzenhouse, Jaussaud, Coyle, Albright, Kinsfather, Cameron, Langton, Detomasi, Fanning, Rehberg, Loiseau, Howard, Dysart, Reed, Wiseman, Young, Wittrock, Reely, Hannon, Stemmer, Soper, Eide, Schick.

Homeroom 33B, 9a . . .

Follet, Hubbard, Nelson, Fitzpatrick, DeMaris, Weaver, Sutherland, Nelson, Thorington, Mathison, Lane, Edwards, Fritzler, Transeth, Morton, Claytor, Sandahl, Buck, Torrey, Schick.

Homeroom 24, 9b . . .

Lamperti, Goodyear, K., Wright, Gowen, Manning, Freeman, Gillock, Oliver, Shimbo, Kelly, Vibbert, Davis, Studebaker, Martin, Hayes, Owens, Connors, Schaub, Goodyear, B., Brien, Hathaway, Worth, Huiff, Scharzel, Trousdale, Levin, Oswald, Hector, Fromdahl, Bowers, Hart, Kibler, Brown.



Homeroom 33A, 9b . . .

Pemberton, Vrattos, Hutsell, Ary, Rauh, Sept, Kralman, Vrattos, L., Mitchell, Janes, Pflugrad, Campbell, Prest, Hallscher, Digh, Gebhardt, Guss., Beck, Moreland, Keiser, O'Dell, DeMaris, Everett, Witt, Bergevin, Martamer, Harp.



Homeroom Study B, 9b . . .

Cation, Jensen, Gillett, Duncan, Webster, Kinsfather, Aylward, Davies, Russell, Dixon, Birkes, Whybark, Gagnon, Markam, Casey, Page, Loose, Henderson, Hannan, Hastings, Sept, Antes, Entze, Sherwood, Geist, Boldman, Taylor, Anderson, McMahon, Kleinbach.



Homeroom 37, 10a . . .

Preas, Sporleder, Spandish, Beatty, Opperman, Gibbons, Lammerts, Dudley, Allard, Kirkman, Weatherman, Wamble, Henderson, Osborne, Tomlinson, Mustrave, Bury, Czychold, Oswald, Lange, Coleman, Geist, Perkins.



Homeroom 10, 10a . . .

Hallwager, Willaby, Dickerson, Graff, Brussels, Allesio, Barclay, Gregg, Harris, Kent, Gradwohl, Ponti, Gehrett, Fisher, Holmes, Weston, Hooper, Dugworth, Matthews.



Homeroom 33, 10a . . .

Glaspy, Bean, Husby, Endsley, Rone, Wiebe, Harris, Youdovitch, Dunning, Drumheller, New, Jackson, Transeth, Fichtner, Romine, Rogers, T., Rogers, D., Yenney, Neslin, Stoller, Hunter, Yeend, Tillotson, Pierce, Brown, Wells, Salmeier, McDougall, Teske.





Homeroom 4, 10a . . .

Jensen, Harold, Wilson, Meiners, Swanson, Ruther, Burghduff, Evans, Wooton, Erdman, Vedder, Cummins, Santo, Huber, Gaub, Swant, Bradshaw, Sturgill, Bates, Saunders, Ireland, Johnson, Miller.



Homeroom 31, 10a . . .

Darnell, Colley, Lyons, Marshall, Hamilton, Shinn, Barker, Wolfe, Rehorn, Rehberg, Bowers, Knowles, Johnson, VanBuskirk, Siverling, Knowles, Johnson, VanBusBradfield, Mackie, Freepons, Davis, Bower, Cochran, Hastings, Smart, Kelso, Walton.



Homeroom 29, 10a . . .

Sheldon, Chisholm, Seitz, Bemus, Hamm, Lonzy, Fisher, Boldman, Shaler, Hillyer, Lewis, LaRue, Kendall, Davis, Hall, Allen, Davis, Warfield, Aylward, DeLong, Holloway, Thomas, Wilson, Taylor.



Homeroom 7, 10a . . .

Biagi, Aylward, Frazier, Snider, Robison, White, Woodward, Harding, Appling, Crego, Plaquet, Schoessler, Wallace, G., Frankland, Wallace, D., Conery, Roberts, Largent, Killian, Smith, Kirkman, Keyes, Herrin, Thompson, Scotter, Neiswanger.



Homeroom 23, 10b . . .

Reid, Clarona, Aylsworth, Whittington, Breding, Stone, Widener, Boldman, Mansfield, Nelson, Gradwohl, DeBoer, Marsh, Gray, Webb, Lyford, Wright, DeWitt, Armstrong, Schmidt, Hilbert, Vigneron, Jordan, Hillyer, Collins, Clark, Estes, Reser, Johnson, Farmer.



Homeroom Library, 10b . . .

Salmeier, Brock, Herrin, Waitz, Hoeffing, Rose, Vails, Frese, Schreiner, Coppel, Lambert, Maxey, King, Michaelis, Williams, Romine, Shearer, Miller, Davison, Banks.

Homeroom 1, 10 b . . .

Overby, Cunningham, Frieske, Andrus, Andrus, B. L., Frere, Oliver, Stutsman, Keen, Mace, McMann, Mang, Anderson, Cooper, Bogle, Harding.



Homeroom 12, 11a . . .

Getman, Cline, Trout, Land, Crecelius, Dull, Haley, Ary, Kipps, Jackson, Collins, Rittenhouse, Harbert, McManus, Brixey, Bowers, Coyle, Jauslin, Schneidmiller, S., Benzel, Bogle, Cunningham, Adams, Schneidmiller, J., Robanski.



Homeroom 28, 11a . . .

Falbo, Hunt, Skeen, Toner, Sterling, Watson, Perry, Adams, D. M., Hopper, Freeman, Lyons, Hill, Smith, Hinchliffe, Flomer, Sporleder, Lawrence, Mantz, Palmer, Adams, Ladd, Johnson, Holmes, Swanson, Olson.



Homeroom Commercial, 11a . . .

Mitchell, Mack, Frazier, Duncan, Webb, Schmidt, Allard, Cram, Kennedy, Pratt, Fulkerson, Ludwigs, Crawford, Wells, Rehberg, Knowles, Cox, Moore, Bramhall, Cornelius, Mace, Transeth, Guenther, Swauger, Bahneman, Eiffert, Gross, Pfaffle.



Homeroom Stenography, 11a . . .

Pittock, Melbye, Retzer, Quesnell, Kelso, Cox, Grabinske, Mardis, Zier, Yokom, Tash, Johnson, Roberts, Hanger, McCoy, Ary, Merry, G., Johnston, Schwab, Merry, F., Rimbey, Witt, Ramey, Dunn, Woolsey, Hawkins, Hart.



Homeroom 25, 11a . . .

Davis, Kennedy, Bailey, Alexander, Davison, Ichikawa, Wagner, Waggoner, Gorman, Reiber, Lyday, MacMeekin, Schreiner, Wendler, Yeend, Trousdale, Fields, Gradwohl, Elliott, Bastron, Bellows, Storie, Boldman, Drennan, Taylor, Schubert.





Homeroom 22, 11a . . .

Reiter, Barney, Hartley, Baer, Ross, Whybark, Claytor, Emerson, Buehler, Foltz, Howard, Kilbourne, Freeman, Sanders, Hilbert, Murphy, Heibel, Eyraud, Williams, Kenworthy, Fuller, Warner, Whitehead, McCarroll, Burnet, Bond, Livengood.



Homeroom 9, 11a . . .

Ward, Hanan, Goble, Hunter, Savage, Sturgill, Watts, Spearman, Dimick, Mosner, Dickey, Simmons, Reid, Halladay, Bryant.



12b's . . .

Gray, Mead, Tarnasky, Dressen, Brennan, Gentry, Hemmelgarn, Jamison, Davis, Lyons, Rea, Taylor, Smith, DeSmet, Goodman, Owsley, Riggs, McEvoy, Plaquet, Onstot, Crimmins, Fleming.



Homeroom 21, 11b . . .

Bryant, Miller, Stoller, Manning, Gilliam, Daggett, Benefiel, Preas, Holtgreve, McNamara, Bristol, White, Isitt, Webber, Hirsh, Schatzel, Dummler, Piper, Clark.

Class Officers

Freshman

John Sutherland President
 Elmer Levin Vice-President
 Marian Palmer Sec.-Treas.

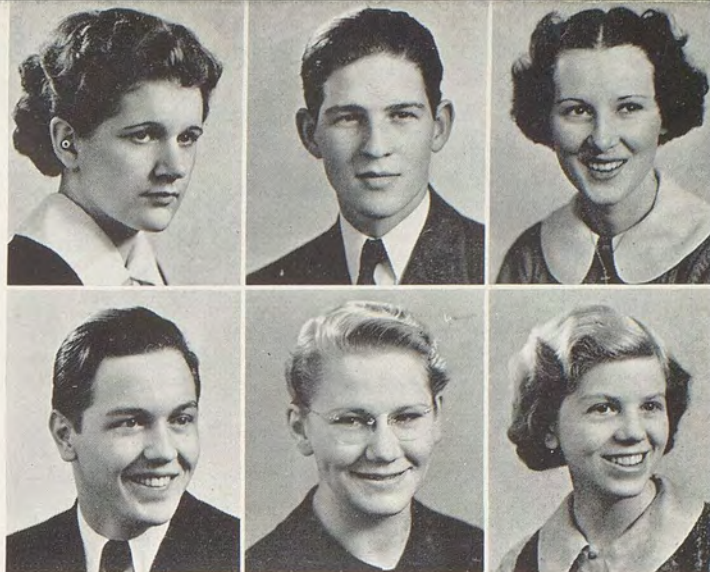
Sophomore

George Romine President
 Betty June Timm Vice-President
 Violet Johnson Sec.-Treas.

Junior

Sherwood Palmer President
 Dorsey Googins Vice-President
 Orville McCarroll Sec.-Treas.

The Class of 1937



Robison
Lemmel

Stewart
Quist

Lockhart
Armstrong

Class Officers

First Semester		Second Semester	
Mary Robison	President	Doug Lemmel	
Robert Stewart	Vice-President	Edna Quist	
Barbara Lockhart	Secretary-Treasurer	Lois Armstrong	
Virginia Rice	Girls' Cabinet	Edna Quist	
Charlotte Loney	Girls' Council	Burnadette McGuire	
Elizabeth Davis	Girls' Council	Peggy Renn	

Class Honor Roll

Elizabeth Davis, Valedictorian	Lyman Cauvel	Marilyn Maxey
Ethel Weaver, Salutatorian	Jesse Cochran	Jim McKinney
Donald Adams	Thelma Eiffert	Bob Miller
Clark Amen	Betty Flaiz	Stuart Miller
Lois Armstrong	Edythe Githens	Edna Quist
Norma Ball	Howard Henderson	Aline Reynolds
Betty Barbee	Floyd Levin	Ora Tate
Gladys Buroker	Dorothy Livengood	Peggy Woodward
Catharine Cates	Charlotte Loney	Kathleen West

Commencement Committee

Doug Lemmel	Stuart Miller
Jim Huntington	Mary Robison
Virginia Rice	Charlotte Loney
Clark Amen	

Announcement Committee

Jesse Cochran	Mary Robison
Barbara Lockhart	Peggy Woodward
Edna Quist	Doug Lemmel

Senior Play Committee

Melvin Bogart	Mary Florence Bendix
Kenneth Smith	Stuart Miller
Marian Jones	



Mrs. Ruth Dunn
Senior Class Advisor



DON ADAMS—
Der Lorelei Verein
Vice-President
Chemistry Team
National Honor
Society

MARION ADEN—
Girls' Council
Social Science Club

ORIAN ALCORN—

EUGENE ALDERMAN—
F. F. A.

CLARK AMEN—
National Honor
Society

WELDON ANDERSON—
Officers' Club
Wa-Hilarities
Glee Club
"Joan of the Nancy
Lee"

MARGARET ARBUCKLE—

RUTH ARCHER—
El Adrea
Legislative Assembly

BOB ARGO—
Science Club
Legislative Assembly

LOIS ARMSTRONG—
L'Alliance Francaise
President
El Adrea
Eh-Kah-Nam Contest
Assistant Editor of
'36 Royal Blue
Editor of '37 Royal
Blue
Secretary of Girls'
Federation
Legislative Assembly
Leaders' Conference
Secretary-Treasurer of
Senior Class
"Importance of Being
Earnest"

ANNA ASHWORTH—
Math Club
Home Ec Club

PAUL BACHTOLD—
Legislative Assembly
Glee Club
Basketball
Wa-Hilarities

ALBERT BAEHR—
W. W. Club
Football
Legislative Assembly

PATRICIA BAGNALL—

BARBARA BAKER—
Legislative Assembly
Gimmel Teth
Girls' Council
Wa-Hilarities
Student Court

BETTY BABREE—
Girls' Classical Club

NORMA BALL—
National Honor
Society
"Joan of the Nancy
Lee"

BERNICE BARNEY—
Home Ec Club

ELLEN BAYNE—
Gimmel Teth
Sponsor, Captain
Girls' Cabinet
Girls' Federation
Treasurer
Girls' Federation
Vice President
Student Court
Tri-State Conference
Journal Staff

CECIL BARNES—

CLARENCE BEALE—

JACK BEESON—

HARRY BENZEL—
Football
Track

MARY FLORENCE BENDIX
Girls' Council
Girls' Cabinet
El Adrea
"The Rose Maiden"
Royal Blue Staff
Legislative Assembly

MELVIN BOGART—
L'Alliance Francaise
Science Club
Future Craftsmen of
America
Royal Blue Staff
"Importance of Being
Earnest"

JAMES BROWN—
Science Club
Future Craftsmen of
America

DOROTHY BRUER—



HAROLD BUERSTATTE—
Officers' Club

GLADYS BURKER—
Home Ec Club
Legislative Assembly
National Honor
Society

MARY HELEN BURY—



CATHERINE CATES—
Science Club
Secretary-Treasurer
President
National Honor So-
ciety Vice-President
Legislative Assembly
Sponsor

LYMAN CAUVEL—
Math Club
National Honor So-
ciety President
Aviation Club
Officers' Club
Rifle Team
Fencing Squad
Chemistry Team

ELVA CHAMBERLAIN—
Gimmel Teth
President
Royal Blue Queen
Legislative Assembly
Student Conference
Cabinet



GEORGIA CLARK—

JESSE COCHRAN—
Basketball
Football
Equites Club
Cabinet
Legislative Assembly
W. W. Club
Officers' Club
National Honor So-
ciety President
Chemistry Team

MARJORIE COCHRAN—
Girls' Council
Girls' Cabinet



WARREN CORNELIUS
Aviation Club
L'Alliance Francaise
Math Club
Legislative Assembly
Future Craftsmen
of America

PAT COWAN—
Wa-Hilarities
Gimmel Teth
Legislative Assembly
Journal Staff
Sponsor
Archery

GORDON CRAM—
Mechanical Drawing
Club
Legislative Assembly



BONNIE JEANNE CULVER
Glee Club
Mixed Chorus

JIMMIE DACRES—
Senate Club

LEONCE DAVIN—
L'Alliance Francaise
Radio Club



DORIS DAVIS—
Home Ec Club

ELIZABETH DAVIS
Math Club
Valedictorian
"The Importance of
Being Earnest"
"Shirt Sleeves"
Girls' Classical Club
President
Wa-Hilarities
National Honor
Society
Legislative Assembly
Girls' Council
Girls' Sextet
Girls' Cabinet

GENEVIEVE DAVIS
Arts & Crafts Club
Vice-President



FRANCIS DAVIS—
Rifle Team

JACK DEMARIS—
Football
Baseball
Wa-Hilarities
Double Quartette

CLARENCE DIPPEL—
Der Lorelei Verein





HOWARD DIX—
Science Club
"Joan of the Nancy
Lee"

MELVIN DOUD—
Math Club

JUANITA DRYDEN—
L'Alliance Francaise
Home Ec Club



VIVIAN DUNNING—
Legislative Assembly
Girls' Classical Club
Science Club Secretary

DENTON DYSART—

JAMES EAGON—



GERALDINE ESTES—
Sponsor
Home Ec Club
Girls' Classical Club
Girls' Glee Club

ORVAL EVANS—

ROBERT FANNING—
Officers' Club



JOE FERRIS—
F. F. A.

BETTY FLAIZ—
Legislative Assembly
Girls' Classical Club
Girls' Cabinet
Girls' Council
National Honor
Society

WENDEL FOGARTY—



MABLE FOWLER—
Chorus

ALEX FRANK—

NORMAN FULTON—
Legislative Assembly
Student Court
Chief Justice



DOROTHA GEHRETT—

EDYTHE GITHENS—
El Adrea
Sponsor
National Honor
Society

MARGARET GORDON—
Home Ec Club
Sponsor



GORDON GRANGE—
F. F. A.
Football
W. W. Club

KEITH GRIFFITHS—
Equites Club
Band
Legislative Assembly
Cabinet
Basketball
W. W. Club
"Joan of the Nancy
Lee"

HAROLD HAMMONS—
Aviation Club



FORREST HANEY—
Radio Club

RAYMOND HAROLD—
"Joan of the Nancy
Lee"
Officers' Club

KENNETH HARTWIG—
Math Club
"Cathedral Doors"

FRED HASTINGS—
Legislative Assembly
Journal Staff

MILDRED HAUSER—
Der Lorelei Verein

RAY HEIMBIGNER—
F. F. A.



CURTIS HOFFMAN—
F. F. A.

JUANITA HUNNEX—
Home Ec Club
Arts & Crafts Club
Social Science Club
"Wa-Hilarities"
Glee Club
Sponsor
"Cathedral Doors"
Rifle Team
Girls' Chorus
"Joan of the Nancy
Lee"

LUCILLE JACOBS—
Girls' Classical Club
"Antigone"



WALTER JANTZ—
Tennis Club
Equites Club

BERKELEY JOHNSON—
Band

MARY ICHIKAWA—
Mechanical Drawing
Club
Home Ec Club



CECIL JOHNSON—
Science Club
Senate Club
Legislative Assembly
Journal Staff

MARION JOHNSON—
Orchestra
Glee Club
Girls' Classical Club
Home Ec Club

WAYNE JOHNSTON—
Social Science Club



ROBERT JONES—
Math Club
Band
"Joan of the Nancy
Lee"

JEAN KENNEDY—
Gimmel Teth
Student Body
Treasurer
Girls' Cabinet
"Wa-Hilarities"
Legislative Assembly
Sponsor
"Importance of Being
Earnest"
President of Girls'
Federation
Girls' Conference

LEONARD KENNEY—
Officers' Club



MARJORIE KENT—
Girls' Classical Club

VIRON KERSH—
Aviation Club Vice-
President
President
Officers' Club

ALFREDA KNIGHT—



BOB KOLB—
Senate Club
Legislative Assembly

ETHEL KRUGER—

PAULINE KRUMBAH—
"Cathedral Doors"
Math Club



CARRIE LAGE—

LOIS LANE—
"Rose Maiden"
Girls' Chorus
El Adrea
"Wa-Hilarities"
Royal Blue Staff
Secretary Girls'
Federation
Girls' Cabinet
"Joan of the Nancy
Lee"

DOUG LEMMEL—
Journal Staff
President of Senior
Class
"Goose Hangs High"
"Joan of the Nancy
Lee"





FLOYD LEVIN—
Legislative Assembly
President of Freshman
Class
Student Court
Yell Staff
Science Club Vice-
President
'36 Royal Blue Staff
'37 Royal Blue Staff
Boys' Glee Club
"Wa-Hilarities"
"The Importance of
Being Earnest"
National Honor
Society

DOROTHY LIVENGOOD—
El Adrea Secretary
Sponsor
'37 Royal Blue Staff
National Honor
Society

CHARLOTTE LONEY—
Legislative Assembly
El Adrea Vice-
President
Girls' Cabinet
Chemistry Team
Girls' Council
"Importance of Being
Earnest"
National Honor
Society

IRIS LYONS—
National Honor
Society
"Joan of the Nancy
Lee"
Royal Blue Staff

GERALD MAHER—

JAMES MCCOY—
Officers' Club

JIM MCKINNEY—
Equites Club
Officers' Club
President
Football
Legislative Assembly
'37 Royal Blue Staff

BOB MILLER—
National Honor
Society

MEYER LEWIS—

BARBARA LOCKHART—
Gimmel Teth
Treasurer
Journal Staff
'36 Royal Blue Staff
Sponsor
Legislative Assembly
Girls' Cabinet

LEROY LUSK—
F. F. A.
Stock Judging Team

GEORGE MAESTRETTI—

BILL MARTIN—
Football
Track
Equites Club
Senate Club
Legislative Assembly
W. W. Club
Eh-Kah-Nam Contest
Journal Staff

PEGGY MACFADDEN—
"Wa-Hilarities"
"Joan of the Nancy
Lee"

ANNA RUTH MEINERS—
El Adrea

STUART MILLER—
President of
Sophomore Class
Math Club
Legislative Assembly
Secretary of Student
Body
Royal Blue Staff
Student Leaders'
Conference
"Importance of Being
Earnest"
Whitman Extempor-
aneous Contest
Equites Club
National Honor
Society
Eh Kah Nam Winner

DEAN LEWIS—

Legislative Assembly
Band
Orchestra
Pep Band

ROBERT LONEY—
F. F. A. Vice-
President, President
Legislative Assembly
Football

FERN LUTTON—

VERROLD MAESTRETTA
Chorus
"Importance of Being
Earnest"

MARILYN MAXEY—
Gimmel Teth
National Honor
Society Vice-
President
Treasurer
Girls' Cabinet
President Girls'
Federation
"Torchbearers"
"Wa-Hilarities"
Girls' Conference
Legislative Assembly

BURNADETTE MCGUIRE
Legislative Assembly
El Adrea Treasurer
'36 Royal Blue
Assistant Editor
'37 Royal Blue Editor
Girls' Council

ATHENA MILLER—
L'Alliance Francaise

EVELYN MOORE—
Vice-President of
Junior Class

MAXINE MOORE—
L'Alliance Francaise

CLAIR MULKEY—
Aviation Club
Rifle Team
Officers' Club
"Importance of Being Earnest"

NATALIE NASCIMENTO—
Gimmel Teth Vice-President
Vice-President of Girls' Federation
Dramatic Club
Legislative Assembly
"Wa-Hilarities"



DELWIN NELSON—
Basketball
Intra-Mural Athletics
Legislative Assembly
Officers' Club

EDWIN NOYER—

CARROLL OBERHOLTZER



PAUL OLSON—
Fencing Squad
Pep Band
Orchestra

LESTER CHARLES PADDOCK—
Track
Football
Basketball
Glee Club

MARJORIE PENNER—
Legislative Assembly
Chorus
Science Club
Home Ec Club
President



IRENE PERRY—
Orchestra
El Adrea
Legislative Assembly

PAULINE PRUTSMAN—
"Wa-Hilarities"
"Joan of the Nancy Lee"
"The Goose Hangs High"

DONALD WILLIAM PUTNAM—
Science Club
Math Club
President
"Cathedral Doors"
Legislative Assembly



EDNA QUIST—
El Adrea President
Vice-President
Legislative Assembly
Girls' Cabinet
Secretary Junior Class
Vice-President Senior Class
Royal Blue Staff
Orchestra
Girls' Council
President
Sponsor
Rifle Squad
Tennis
National Honor Society

DOROTHY RAMSAY—
Gimmel Teth
Girls' Council
Girls' Cabinet
Legislative Assembly

JACK RASMUSSEN—
Aviation Club



PAUL RIGGS—
Radio Club
Legislative Assembly

MARY ROBISON—
Legislative Assembly
Gimmel Teth
President
Senior Class
President
Girls' Council
Girls' Cabinet
Archery
Journal Staff
"Joan of the Nancy Lee"
Rifle Team

LYNN ROBBINS—
"Cathedral Doors"
"Wa-Hilarities"
Boys' Chorus



ROSE ROCK—
Social Science Club

LOIS RUSSELL—

RUTH RUSSEL—
Royal Blue Staff



MARGARET SANTO—
Home Ec Club

EVERETT E. SCHAEFER—
F. F. A.
W. W. Club
Football
Legislative Assembly

HELEN PEGGY SCHIFFMAN—
El Adrea
Journal Staff





MARY ANN SCHIFFNER—
Der Lorelei Verein
Vice-President
Journal Staff
"Joan of the Nancy
Lee"

EILEEN SCHIFFNER—
Der Lorelei Verein
Secretary
"Joan of the Nancy
Lee"
Journal Staff

LEOLA SCHWAB—
"Wa-Hilarities"



JIMMIE SEITZ—
Math Club
Senate Club
Legislative Assembly
W. W. Club
Basketball

CLAYTON SHAW—
Vice-President
Student Body
Equites Club
W. W. Club
Basketball
Legislative Assembly

BETTY SIMMONDS—
Girls' Classical Club



KENNETH CECIL SMITH
Band
Legislative Assembly
Football
Track
Math Club
"Importance of Being
Earnest"

VERA SMITH—

ILENE SMOOTZ—
Orchestra
National Honor
Society
Royal Blue Staff



DON SPENCER—
Glee Club
Science Club
Fencing Squad
Rifle Team

DOROTHY SWAUGER—
Science Club
Glee Club
"Wa-Hilarities"

DON STEADMAN—
Industrial Arts Club
Aviation Club
Officers' Club



RICHARD STEADMAN—
F. F. A. Secretary
Vice-President
Rifle Team

VIRGIL STRAM—
"Wa-Hilarities"
Cabinet
"Shirtsleeves"
"Antigone"
Dramatic Club

HOWARD STILLWELL—
Officers' Club
Pep Band
Band
Orchestra



ORA TATE—
Science Club
President
Girls' Classical Club
Secretary
Girls' Cabinet
Legislative Assembly

MARION B. TAYLOR—
Legislative Assembly
Science Club
Secretary
"Wa-Hilarities"
"Joan of the Nancy
Lee"
El Adrea
Quartet

HELEN TEMPANY—
"Rose Maiden"
"Joan of the Nancy
Lee"



JOHN W. TEMPANY—
Officers' Club
"Wa-Hilarities"
Glee Club
"Joan of the Nancy
Lee"

MARY LOIS TEXADA—

WILLABELLE TORREY—
"Wa-Hilarities"



EDYTHE TRUMBLE—
Science Club

BARDEL VAN DONGE—
F. F. A.
Baseball

RUTH WALKER—
Chorus
Tennis
"Joan of the Nancy
Lee"
Legislative Assembly

BERNICE WALTERS—
Glee Club

ETHEL WEAVER—
Home Ec Club
Social Science Club
President
National Honor
Society
Salutatorian

ELAINE WEBBER—
Home Ec Club
Arts and Crafts Club
Journal Staff
Glee Club
"Joan of the Nancy
Lee"



BILL WEBER—
Basketball
Track
W. W. Club

KATHLEEN WEST—
Social Science Club
El Adrea
Legislative Assembly
National Honor
Society

DAVID WIEBE—
Officers' Club
Football
Der Lorelei Verein



LILLIAN WIEBE—
"Joan of the Nancy
Lee"

HAROLD WILLIAMS—

WILLIAM WILLIAMSON
Equities Club
Math Club



JACK WOODS—
Social Science Club
Aviation Club
Wrestling Club

PEGGY WOODWARD—
Gimmel Teth
National Honor
Society
Royal Blue Staff
Student Court
Girls' Cabinet
Secretary of Girls'
Federation
Girls' Conference
Girls' Council
"Rose Maiden"

BOB ZARING—
Dramatic Club



CLARENCE BEALE—

EDWIN DOUGLASS—
Der Lorelei Verein
Secretary

THELMA EIFFERT—
Legislative Assembly



ALBERTA GARRETT—
"Joan of the Nancy
Lee"
Chorus

BETTY JEAN GOTTLIEB
Math Club
"Wa-Hilarities"
Chorus
Girls' Sextette
Girls' Trio
"Joan of the Nancy
Lee"
Eh Kah Nam Contest

CHARLES HARBERT—



HOWARD HENDERSON—
National Honor
Society

KENNETH HENDERSON—
Production Staff of
"Goose Hangs
High"
Operetta
Senior Play

HAROLD HENDRICKSON—



DONALD HOWARD—

JIM HUNTINGTON—
Science Club
Future Craftsmen of
America

CARL JEDIN—
Glee Club
"Wa-Hilarities"
Der Lorelei Verein
Legislative Assembly
Track





MARIAN JONES—
Legislative Assembly
El Adrea Treasurer
"Joan of the Nancy
Lee"
"The Importance of
Being Earnest"

EUGENE KEISER—
Wrestling Club

MEIDA KENNEY—
Science Club
Der Lorelei Verein



DOROTHY LAND—
Glee Club
"Wa-Hilarities"
"Joan of the Nancy
Lee"

BETH LANE—
Social Science Club
Treasurer

RESSA LEONARD—



LA SALLE LEROUX—
President of Junior
Class
President of Student
Body
Tennis Champion
Royal Blue Staff
Journal Staff

WAYNE LOWERY—
Math Club
"Cathedral Doors"

JEANNETTE MERKLE—



VIRGINIA MITCHELL—
Legislative Assembly
Girls' Classical Club
Math Club
Home Ec Club
President

DOUGLAS MULHAIR—
Mechanical Drawing
Club
Radio Club
Officers' Club

HAZEL PROCTOR—
Home Ec Club



ROBERT REID—
L'Alliance Francaise
Science Club
Fencing Squad
Yell Staff

MARVIN REIMCHE—

PEGGY RENN—
Gimmel Teth
Sponsor
Girls' Council
Orchestra
Rifle Squad



ALINE REYNOLDS—
Legislative Assembly
Math Club
El Adrea
"Joan of the Nancy
Lee"
Vice-President Girls'
Federation
National Honor
Society

VIRGINIA RICE—
Girls' Classical Club
Girls' Cabinet

BILL RUTHER—
W. W. Club
Officers' Club
Football
Rifle Team
"Joan of the Nancy
Lee"



ELLA SCHULTZ—
Girls' Council
Girls' Classical Club

BOB STEWART—
Band
Aviation Club
Legislative Assembly
Chorus
Vice-President of
Senior Class
President of
Freshman Class
Journal Staff
Vice-President of
Sophomore Class

ELSIE MAE THOMAS—



VA LORIS VERNON—
L'Alliance Francaise
Der Lorelei Verein

INDEX

- Adams, Donald, 19, 48.
 Adams, Doris Mae, 13, 18, 26, 34, 45.
 Adams, Harry, 18, 45.
 Adams, John, 8, 12, 18, 19, 20, 21, 24, 35, 45.
 Aden, Marian, 48.
 Albright, Maxine, 42.
 Alcorn, Orian, 18, 48.
 Alderman, Ugean, 41, 48.
 Alexander, Geraldine, 45.
 Allard, Frances, 26, 43.
 Allard, Juanita, 26, 45.
 Allan, Robert, 12, 18, 35, 44.
 Allesio, William, 43.
 Allison, Capt: P. W., 10, 38.
 Amen, Clark, 39, 48.
 Anderson, Earnest, 43.
 Anderson, Louise, 18, 41.
 Anderson, Paul, 10, 14, 20, 24, 35, 38, 41.
 Anderson, Ralph, 45.
 Anderson, Weldon, 30, 48.
 Andrus, Betty Lou, 31, 45.
 Angell, Mable, 10.
 Ants, Henry, 43.
 Austin, Basil, 10.
 Appling, Betty Rae, 18, 44.
 Arbuckle, Margaret, 31, 48.
 Archer, Ruth, 48.
 Argo, Bernard, 19.
 Argo, Bob, 48.
 Armstrong, Lois, 12, 13, 17, 18, 20, 29, 35, 47, 48
 Armstrong, Lowell, 44.
 Ary, Marian, 43.
 Ary, Robert, 45.
 Ary, Usona, 45.
 Ashworth, Anna, 18, 48.
 Aylsworth, Jane, 44.
 Aylward, Mary Jean, 44.
 Alyward, Shirley, 43.
 Aylward, Wayne, 19, 44.
 Bachtold, Paul, 12, 48.
 Baer, Albert, 48.
 Baer, Ruth, 46.
 Bagnall, Patricia, 48.
 Bahneman, Fred, 45.
 Bailey, Mary, 45.
 Baker, Barbara, 48.
 Baker, Sarah Lucile, 18, 44.
 Ball, Norma, 18, 39, 48.
 Banks, Arthur, 12.
 Barbee, Betty, 48.
 Barbuto, Joe, 42.
 Barclay, Dave, 43.
 Barnes, Cecil, 18, 40, 48.
 Barney, Bernice, 48.
 Barney, Bonita, 42.
 Barney, Vivian, 46.
 Bastron, Roland, 31, 45.
 Bates, Curtis, 28, 44.
 Bates, Miles, 14, 42.
 Batfary, Frances, 42.
 Bayne, Ellen, 12, 13, 16, 18, 26, 31, 34, 37, 48.
 Beale, Clarence, 40, 48, 55.
 Beale, Dallas, 40.
 Beale, Harrison, 42.
 Bean, Bettilyn, 18, 21, 43.
 Beatty, Alice, 30, 43.
 Beck, Arthur, 43.
 Beeson, Jack, 19, 37, 41, 48.
 Beeson, Lewis, 18.
 Bellows, Clyde, 19, 45.
 Bemus, Mary Helen, 18, 21, 44.
 Bendix, Mary Florence, 13, 17, 21, 48.
 Benefiel, Anita, 19, 26, 46.
 Bennhoff, Fred, 12.
 Benzel, Harold, 21, 24, 45.
 Benzel, Harry, 15, 40, 48.
 Bergevin, Keith, 43.
 Berry, Wayne, 8, 19, 20, 25.
 Biagi, Margaret, 44.
 Bicklehaupt, Carolyn, 20.
 Birkes, Donald, 43.
 Bishop, Blakely, 25.
 Bishop, Harold, 38.
 Bogart, Melvin, 17, 20, 29, 49.
 Bogle, Lee, 30, 45.
 Bogle, Raymond, 15, 30, 45.
 Boldman, Amel, 19, 41, 45.
 Boldman, Doris, 12, 44.
 Boldman, Jim, 21, 44.
 Boldman, Rufus, 43.
 Bond, Owen, 46.
 Bowers, Alma, 45.
 Bowers, Curtis, 12, 25.
 Bowers, Francis, 43.
 Bowers, Margaret, 12, 18.
 Bradfield, Howard, 44.
 Bradshaw, Don, 44.
 Bramhall, Jack, 45.
 Brading, Ardean, 44.
 Brennan, Ardith, 46.
 Bristol, Roberta, 26, 46.
 Brixey, Nadine, 45.
 Brown, Glenn, 43.
 Brown, James, 17, 38, 49.
 Brown, Rodney, 43.
 Bruer, Dorothy, 49.
 Brumbach, Don, 20.
 Brussels, Marjorie, 43.
 Bryant, David, 46.
 Bryant, Virginia, 18, 46.
 Buck, Bill, 42.
 Buehler, Frieda, 46.
 Buerstatte, Harold, 49.
 Burgdoff, Dorothy, 44.
 Burnet, James, 37, 46.
 Buroker, Gladys, 18, 49.
 Burton, Blaine, 19.
 Bury, Irene, 5.
 Bury, Mary Helen, 31, 43, 49.
 Butherus, Victor, 42.
 Cameron, Charles, 41.
 Cameron, John, 42.
 Campbell, Craig, 18.
 Campbell, Helen, 43.
 Carter, Ruth, 26.
 Casey, Janet, 43.
 Cates, Catharine, 20, 39, 49.
 Cates, Margaret, 42.
 Cation, Myrna, 31, 34, 43.
 Cauvel, Lyman, 19, 37, 38, 39, 49.
 Chamberlain, Darrell, 16.
 Chamberlain, Elva, 12, 18, 21, 31, 49.
 Chisholm, Barbara, 12, 13, 18, 21, 26, 31, 44.
 Clark, George, 19, 46, 49.
 Clark, Harrison, 10, 18.
 Clark, Robert, 44.
 Clarona, Kathleen, 44.
 Claytor, Betty, 31, 46.
 Claytor, Fred, 42.
 Clifton, Vivian, 42.
 Cine, Helen, 19, 45.
 Clodius, Robert, 3, 16, 20.
 Clutter, Lois, 31.
 Cochran, Eugene, 12, 14, 18, 19, 44.
 Cochran, Jesse, 12, 14, 19, 20, 21, 37, 39, 49.
 Cochran, Marjorie, 34, 49.
 Coleman, Helen, 28.
 Coleman, Mary Lou, 18, 43.
 Colley, Eunice, 31, 35, 44.
 Collins, Peter, 44.
 Collins, Susan, 45.
 Connors, Charlotte, 31, 43.
 Connelly, Armand, 44.
 Cooper, Billy, 45.
 Cornelius, Warren, 12, 19, 49.
 Coule, Eileen, 42.
 Courtney, Maxine, 34.
 Cowan, Patty, 18, 49.
 Cox, Dessie, 10, 18.
 Cox, Dorothy, 13, 18, 20, 45.
 Cox, Golda, 45.
 Coyle, Betty, 45.
 Coyle, Clarence, 18.
 Coyle, Donald, 42.
 Craig, Bill, 16, 18.
 Cram, Peggy, 18, 45.
 Cram, Gordon, 49.
 Crawford, Jeanne, 12, 18, 35, 45.
 Cornelius, Stanley, 45.
 Creclius, Virginia, 18, 45.
 Grego, Virginia, 44.
 Crimmins, Martin, 19, 28, 35, 46.
 Culver, Bob, 42.
 Culver, Bonnie Jean, 49.
 Cummins, Helen, 44.
 Cunningham, Robert, 31.
 Cunnington, Glen, 19, 45.
 Czylhold, Margaret, 43.
 Dacres, Jim, 18, 35, 49.
 Daggett, Arlene, 26, 46.
 Dalton, Marvin, 19, 37.
 Darnell, Myrna, 44.
 Darnell, Wilma, 42.
 Davies, Marian, 43.
 Davin, Leonce, 49.
 Davis, Betty Jean, 44.
 Davis, Doris, 49.
 Davis, Elizabeth, 12, 13, 18, 29, 34, 39, 49.
 Davis, Francis, 37, 44, 49.
 Davis, Genevieve, 31, 49.
 Davis, Mary Alice, 18, 21, 26, 30, 44.
 Davis, Jessie Lou, 13, 16, 45.
 Davis, Roger, 43.
 Davis, Ruth, 46.
 Davison, Dorothy, 13, 18, 26, 45.
 DeBoer, Jean, 31, 44.
 DeLong, Doris, 44.
 DeMaris, Charlotte, 42.
 DeMaris, Harry, 43.
 DeMaris, Jack, 30, 35, 49.
 DeSmet, Lorena, 18, 21, 46.
 DeTomasi, Mary, 31, 42.
 DeWitt, Bob, 12, 24, 41, 44.
 Dickerson, Peggy, 43.
 Dickey, Bill, 46.
 Dicus, Charles, 12.
 Diedesch, Marie, 10, 18.
 Dies, Carl, 12.
 Digh, Selma, 43.
 Dimick, Harold, 8, 10, 24, 20.
 Dimick, Marlen, 17, 18, 24, 40, 46.
 Dimmick, June, 31, 42.
 Dippel, Clarence, 49.
 Dix, Howard, 22, 30, 40.
 Dixon, Dale, 43.
 Dixon, Pearl, 26.
 Doud, Melvin, 35, 50.
 Douglas, Edwin, 19, 40, 55.
 Draper, Juliana, 10.
 Drennan, Eldon, 28, 45.
 Dressen, Eleanor, 46.
 Driskell, Glenna, 20, 26.
 Drumheller, Bill, 18, 43.
 Dryden, Juanita, 50.
 Duckworth, Gene, 43.
 Dudley, Maye, 43.
 Duff, Verl, 42.
 Dull, Betty, 45.
 Dummler, William, 40, 46.
 Duncan, Dorothy, 43.
 Duncan, Jack, 38.
 Duncan, May, 45.
 Dunn, Robert, 45.
 Dunn, Ruth, 19, 47.
 Dunning, Thelma, 43.
 Dunning, Vivian, 20, 35, 50.
 Dirk, William, 42.
 Dysart, Carl, 42.
 Dysart, Denton, 50.
 Eagon, James, 50.
 Eby, Lula, 19.

Edwards, Annabelle, 42.
 Eide, Earl, 42.
 Eiffert, Robert, 19, 45.
 Eiffert, Thelma, 12, 55.
 Elliott, David, 45.
 Emigh, Ralph, 10.
 Emerson, Violet, 31, 46.
 Endsley, Beulah, 31, 43.
 Entze, Rudolph, 43.
 Erdman, Johnny, 44.
 Estes, Geraldine, 18, 50.
 Estes, Ralph, 12, 24, 30, 44.
 Evans, Alice, 44.
 Evans, Orval, 50.
 Everett, Robert, 43.
 Eyraud, Elva, 46.
 Fabricius, Helen, 10, 20.
 Falbo, Joe, 42.
 Falbo, Mary, 45.
 Falk, Myrtle, 10.
 Fanning, Robert, 12.
 Fanning, Helen, 42.
 Farmer, Dorothy, 44.
 Farris, Joe, 50.
 Fichtner, Kenneth, 14, 43.
 Fiedler, Dorothy, 5, 12.
 Fields, Earl, 45.
 Fields, Gene, 42.
 Fiewig, Mable, 19, 26.
 Fisher, Laurence, 43.
 Fisher, Robert, 18, 44.
 Fitzpatrick, Joyce, 42.
 Flaiz, Betty, 39, 50.
 Fleming, Dean, 46.
 Flomer, Adair, 16, 45.
 Fogarty, Wendel, 50.
 Follett, Melva, 42.
 Foltz, Dorothea, 19, 28, 46.
 Fowler, Mable, 31, 50.
 Frank, Alex, 40, 50.
 Frank, Solomon, 24.
 Franklin, Jack, 16, 44.
 Frazier, Kathryn, 18, 44.
 Frazier, Wilma, 45.
 Freeman, Barbara, 12, 46.
 Freeman, Frank, 19, 45.
 Freeman, Teresa, 12, 43.
 Freepons, Edward, 18, 44.
 Frere, Bernice, 12, 45.
 Frieske, Laura, 45.
 Fritzler, Helen, 31, 42.
 Froese, Oscar, 19.
 Fromdahl, Earl, 43.
 Fulkerson, Martha, 19, 45.
 Fuller, Dale, 46.
 Fuller, Dorothy, 12, 30.
 Fulton, Norman, 12, 42, 50.
 Gable, Nellie, 46.
 Gagnon, Lavell, 43.
 Gale, Walter, 18.
 Gallaher, Earnest, 42.
 Garet, Alberta, 20, 55.
 Garrett, Alice, 12, 20.
 Gaub, Boyd, 44.
 Gebhardt, Edith, 43.
 Gehrett, Dorothea, 50.
 Gehrett, Rodney, 43.
 Geist, Bob, 43.
 Geist, Marjorie, 43.
 Gentry, Dale, 8, 12, 15, 24.
 Gentry, Erma, 31, 46.
 Gettman, Helen, 19, 45.
 Gibbons, Dorothy, 19, 26, 43.
 Gillett, Rosella, 43.
 Gilliam, Helen, 26, 46.
 Gillock, Velma, 43.
 Githens, Edythe, 50.
 Glaspey, Glen, 43.
 Glover, Phyllis, 42.
 Goble, Don, 42.
 Goodman, Donald, 46.
 Goodman, Nadine, 42.
 Goodyear, Barbara, 43.
 Goodyear, Kenneth, 43.
 Gordon, Margaret, 18, 31, 50.
 Gorman, John, 14, 19, 20, 35, 45.
 Gottlieb, Betty Jean, 31, 38, 55.
 Gottwig, June, 42.
 Gowen, Roberta, 43.
 Grabinske, Hilda, 31, 45.
 Gradwohl, Harold, 45.
 Gradwohl, Jacob, 12, 43.
 Gradwohl, Marjorie, 44.
 Graham, Mabel, 10.
 Grange, Gordon, 15, 19, 50.
 Gray, Lois, 42.
 Gray, Loma, 46.
 Gray, Sam, 44.
 Gregg, June, 43.
 Griffiths, Keith, 8, 12, 19, 20, 25, 30, 50.
 Groff, Talleta, 31, 43.
 Gross, Alvin, 44.
 Gross, Edward, 45.
 Gross, Warren, 43.
 Grote, Ben, 35.
 Guenther, Bill, 12, 18, 45.
 Hahn, Cora, 31.
 Haigh, Helen, 42.
 Hale, June, 18.
 Haley, Earl, 18, 45.
 Hall, Roland, 44.
 Halliday, Howard, 19, 37, 46.
 Hallsher, Elsie, 43.
 Hamilton, Elsie Jean, 44.
 Hamm, Fay, 10.
 Hamm, Lois, 44.
 Hammons, Harold, 50.
 Haney, Forrest, 50.
 Hanger, Katherine, 17, 18, 38, 45.
 Hanan, Isabel, 46.
 Hanan, Warren, 42.
 Harran, Eugene, 43.
 Harbert, Betty, 12, 18, 26, 45.
 Harbert, Charles, 55.
 Harbert, Frank, 42.
 Harding, Dorothy, 44.
 Harding, George, 45.
 Harold, Jane, 12, 13, 26, 31, 44.
 Harold, Raymond, 19, 30, 50.
 Harp, Wayne, 43.
 Harris, Grace, 43.
 Harris, Louise, 43.
 Hart, Gordon, 43.
 Hartley, Corleen, 46.
 Hartwig, Kenneth, 40, 50.
 Harvey, Philip, 18.
 Harvey, Virginia, 12, 18, 34.
 Harvey, Wallace, 32.
 Hastings, Bill, 43.
 Hastings, Charles, 44.
 Hastings, Fred, 16, 40, 51.
 Hathaway, Glen, 43.
 Hauser, Mildred, 51.
 Hawkins, Herbert, 45.
 Hayes, Helen, 43.
 Hayes, Jean, 19, 31.
 Hector, Lelan, 43.
 Heibel, Alberta, 46.
 Heimbürger, Raymond, 51.
 Hemmelgran, Anita, 46.
 Henderson, Florence, 16, 26, 43.
 Henderson, Howard, 39, 55.
 Henderson, Kenneth, 55.
 Henderson, Lois, 43.
 Hendricson, Harold, 55.
 Hergert, Marian, 26.
 Herrin, Bob, 44.
 Hesser, Louise, 12, 31.
 Hilbert, Cora Jean, 31, 44.
 Hilbert, Maxine, 18, 28, 46.
 Hill, Henry, 21.
 Hill, Ruth, 45.
 Hillyard, Chester, 44.
 Hillyard, Curtis, 44.
 Hinchliff, Phyllis, 45.
 Hirsch, Robert, 46.
 Hoffman, Curtis, 51.
 Holloway, Merton, 18, 44.
 Holmes, Ralph, 43.
 Holmes, Robert, 45.
 Holtgreve, Frances, 19, 26, 46.
 Holwager, Marjorie, 19, 33.
 Hooper, Robert, 12, 18, 43.
 Hopper, Norma, 26, 45.
 Howard, Bob, 42.
 Howard, Donald, 35.
 Howard, Helen, 16, 46.
 Howard, Madeline, 26, 42.
 Hubbard, Doris, 42.
 Hubert, Alvin, 44.
 Huff, Tom, 43.
 Hunnax, Juanita, 26, 46, 51.
 Hunt, Camille, 12, 46.
 Hunt, Erma, 26.
 Hunt, Roy, 41.
 Hunter, John, 43.
 Hunter, Lucile, 46.
 Huntington, Jim, 55.
 Hurst, Roy, 41.
 Husby, Katharine, 50, 43.
 Hutsell, Bob, 42.
 Hutsell, Shirley, 43.
 Ichikawa, Ada, 45.
 Ichikawa, Mary, 51.
 Idol, Virginia, 10, 30.
 Ireland, Pat, 30, 44.
 Isitt, Kirkman, 46.
 Jackson, Jack, 18, 24, 43.
 Jackson, Pearl, 45.
 Jacky, Laurence, 10, 16.
 Jacobs, Lucile, 18, 51.
 James, Gerald, 43.
 Jamison, Viola, 46.
 Janshaw, Irene, 22.
 Jantz, Walter, 40, 51.
 Jouslin, Josephine, 42.
 Jouslin, Neoma, 45.
 Jaussaud, Leontine, 42.
 Jedin, Carl, 19, 55.
 Jensen, Barbara, 53.
 Jensen, Maxine, 44.
 Johnson, Berkeley, 51.
 Johnson, Cecil, 12, 16, 35, 51.
 Johnson, Clifford, 42.
 Johnson, Marion, 18, 51.
 Johnson, Marjorie, 45.
 Johnson, Maxwell, 42.
 Johnson, Leo, 45.
 Johnson, Ted, 44.
 Johnson, Violet, 13, 44.
 Johnson, Willard, 37.
 Johnston, Dick, 45.
 Johnston, Viron, 44.
 Johnston, Wayne, 51.
 Jones, Marian, 18, 20, 56.
 Jones, Robert, 30, 40, 51.
 Jordon, Leland, 44.
 Keck, Lois, 31.
 Keen, Bonnie, 45.
 Keiser, Eugene, 56.
 Keiser, Leslie, 43.
 Kelly, Bud, 20.
 Kelly, Helen, 43.
 Kelso, Evelyn, 16, 45.
 Kelso, Stanley, 18, 44.
 Kendall, Thelma, 44.
 Kennedy, Betty Lou, 18, 21, 45.
 Kennedy, Jean, 12, 18, 21, 29, 34, 35, 51.
 Kennedy, Martha, 12, 18, 21, 34, 45.
 Kenney, Leonard, 51.
 Kenney, Meida, 19, 56.
 Kent, Eleanor, 43.
 Kent, Marjorie, 51.
 Kenworthy, Wendell, 46.
 Kenyon, Alice, 10.

Kenyon, Dick, 20, 42.
 Keyes, Donald, 8, 18, 19, 24, 40, 44.
 Kibler, Billie, 43.
 Kilbourne, Leora, 46.
 Killian, Raymond, 44.
 Kincaid, V. C., 45.
 Kinsfather, Alex, 42.
 Kinsfather, Irene, 19, 31, 43.
 Kinsfather, Paul, 42.
 Kirk, Bess, 10.
 Kirkman, Betty, 43.
 Kirkman, Bob, 44.
 Kirsch, Viron, 19, 51.
 Klein, Helen, 26.
 Klein, Lois, 42.
 Kleinbach, George, 43.
 Kleinbach, Reuben, 20.
 Knight, Alfreda, 51.
 Knobel, Earl, 15.
 Knowles, Kenneth, 44.
 Knowles, Marian, 45.
 Kolb, Bob, 18, 51.
 Kralman, Arminda, 43.
 Krueger, Edith, 19.
 Kruger, Ethel, 51.
 Krumbah, Pauline, 5, 19, 51.
 Kyle, Worth, 43.
 Lacey, W. A., 9.
 Ladd, Fred, 45.
 Lage, Carrie, 51.
 Lambert, Helen, 26.
 Lammerts, Lorraine, 19, 26, 43.
 Lamperti, Joe, 43.
 Land, Dorothy, 56, 31.
 Land, Ruth, 45.
 Lane, Beth, 56.
 Lane, Jean, 42.
 Lane, Lois, 13, 17, 30, 34, 51.
 Lange, Beth, 26, 43.
 Langton, Delbert, 42.
 Largent, John, 44.
 LaRue, Stirling, 19, 28, 30, 44.
 Lawrence, France, 45, 19, 28.
 Leeper, Maxine, 42.
 Lehrman, Howard, 12.
 Lemmel, Doug., 20, 21, 28, 30, 31, 47, 51.
 Leonard, Theda, 42.
 Leonard, Ressa, 56.
 LeRoux, LaSalle, 3, 12, 20, 21, 35, 56.
 Leuthy, Frances, 3, 35.
 Levin, Elmer, 12, 19, 40, 43.
 Levin, Floyd, 3, 17, 21, 29, 52.
 Lewis, Dean, 52.
 Lewis, John, 44.
 Lewis, Meyer, 52.
 Lindner, Lillian, 11.
 Lindstrom, Elsie Mae, 42.
 Little, Agnes, 20.
 Livengood, Dorothy, 13, 17, 39, 52.
 Livengood, Gordon, 46.
 Lloyd, Ellis, 19.
 Lobaugh, Dean, 9.
 Lockhart, Barbara, 12, 13, 21, 47, 52.
 Loiseau, Mignon, 42.
 Loney, Charlotte, 13, 18, 29, 39, 52.
 Loney, Robert, 52.
 Loney, Sarah Ellen, 17, 18, 20, 44.
 Loose, Esther, 43.
 Lowery, Wayne, 56.
 Ludwigs, Dorothy Jean, 12, 13, 16, 17, 28, 34, 45.
 Lusk, LeRoy, 38, 40, 52.
 Lutton, Fern, 18, 52.
 Lybecker, Chester, 11, 38.
 Lyday, Dorothy, 45.
 Lyford, James, 44.
 Lyons, Iris, 31, 52.
 Lyons, John, 18, 45, 46.
 Lyons, Rita, 44.
 Mace, Kenneth, 45.
 MacFadden, Peggy, 52.
 MacGown, Paul, 11, 25, 40.
 MacMeekin, Jean, 16.
 MacMeekin, Joan, 45.
 Mack, Bonnie June, 45.
 Mackie, Lois, 44.
 Maestretta, Verrold, 29, 30, 52.
 Maestretti, George, 52.
 Maiuri, Joe, 42.
 Mang, Bob, 19.
 Mang, Robert, 45.
 Manning, Margaret, 12, 46.
 Mansfield, Mitzi, 44.
 Mantz, Lee, 30, 35, 45.
 Mardis, Aileen, 18, 45.
 Markham, Barbara, 43.
 Marsh, Mervin, 44.
 Marshall, Grace, 44.
 Martamer, Irwin, 43.
 Martin, Bill, 12, 15, 19, 20, 37, 38, 52.
 Martin, Joan, 20, 43.
 Marum, Patty, 13, 18, 21, 26, 30.
 Mathison, Elizabeth, 42.
 Matthews, Clayton, 43.
 Maxey, Aurel, 18, 44.
 Maxey, Marilyn, 13, 18, 39, 52, 34.
 McCormick, Helen, 11, 34.
 McCarrroll, Orville, 28, 46.
 McCoy, Gordon, 8, 12, 15, 16, 20, 21, 25, 45.
 McCoy, James, 3, 19, 52.
 McDonald, Christine, 42.
 McDonnell, Catharine, 28.
 McDougal, Robert, 43.
 McEvoy, Bob, 46.
 McFall, Virgil, 42.
 McGuire, Burnadette, 12, 17, 18, 34, 35, 52.
 McInyre, Lucille, 11.
 McKinney, Jim, 12, 15, 17, 19, 20, 37, 52.
 McLachlan, Frances, 26.
 McLachlan, Isabel, 20.
 McLain, Fern, 42.
 McLaughlin, Eugene, 42.
 McMahan, Norton, 43.
 McMann, Jack, 25, 45.
 McManus, Goldie, 45.
 McNamara, Irene, 19, 26, 46.
 Mead, Mabel, 18, 46.
 Meiners, Anna Ruth, 18, 52.
 Meiners, Delia, 18, 44.
 Merkle, Fred, 15.
 Merkle, Jeanette, 31, 56.
 Merlybe, Ruth, 18, 34, 45.
 Merry, Francis, 45.
 Merry, Gilbert, 45.
 Michaelis, Harley, 40, 19.
 Miller, Athena, 52.
 Miller, Bob, 52.
 Miller, Emma, 42.
 Miller, Grace, 26, 46.
 Miller, Ivan, 42.
 Miller, Stuart, 3, 12, 17, 18, 20, 26, 29, 38, 39, 52.
 Miller, Ward, 18, 35, 44.
 Mitchell, Mary Margaret, 43.
 Mitchell, V. C., 18.
 Mitchell, Virginia, 31.
 Mizony, Harold, 11.
 Moore, Dorothy, 45.
 Moore, Evelyn, 18, 52.
 Moore, Robert, 42.
 Moreland, Phillip, 43.
 Morns, Marjorie, 42.
 Morton, Paul, 12, 42.
 Mossner, Joe, 46.
 Mulhair, Douglas, 19, 37, 56.
 Mulkey, Clair, 19, 29, 37, 40, 52.
 Murphy, Jean, 46.
 Mustgrave, Burnetta, 43.
 Myers, Leonard, 11.
 Nascimento, Natalie, 3, 13, 33.
 Neiswanger, Eugene, 44.
 Nelson, Eleanor, 44.
 Nelson, Carlotta, 42.
 Nelson, Delwin, 53.
 Nelson, Leland, 42.
 Neslin, Milan, 18, 43.
 New, David, 18, 43.
 Noyer, Edwin, 16, 53.
 O'Brien, Eugene, 25, 43.
 O'Dell, Frank, 25, 43.
 Oldridge, Gwen, 31.
 Oliver, Donna, 45.
 Oliver, Maida, 31, 43.
 Olson, Paul, 16, 53.
 Olson, Raymond, 130, 45.
 Onstot, Walter, 46.
 Opperman, Pearl, 43.
 Osborne, Ethel, 31, 43.
 Oswald, Betty, 12, 19, 26, 43.
 Oswald, Henry, 43.
 Overby, Leigh Ora, 18, 45.
 Owens, Phyllis, 43.
 Owsley, Robert, 14, 46.
 Paddock, Lester, 35, 53.
 Page, Olga, 43.
 Palmer, Marian, 13, 20, 28, 42.
 Palmer, Sherwood, 18, 30, 38, 45.
 Pemberton, Maxine, 43.
 Penner, Marjorie, 31, 53.
 Perica, Edna, 42.
 Perkins, Shirley, 26, 43.
 Perry, Chesley, 42.
 Perry, Irene, 53.
 Perry, Juanita, 45.
 Peterson, Ivy, 11.
 Peterson, Orville, 42.
 Pfaffle, Clifford, 19, 45.
 Pflugrad, Howard, 43.
 Pierce, Vard, 37, 43.
 Piper, Harold, 37, 46.
 Pittock, Bette, 30, 45.
 Plaquet, Donald, 46.
 Plaquet, Peggy, 44.
 Ponti, Francis, 43.
 Pratt, Nancy, 12, 31, 45.
 Preas, Lois, 12, 43.
 Preas, Verne, 46.
 Prent, Bernice, 43.
 Proctor, Hazel, 56.
 Prutsman, Gerald, 42.
 Prutsman, Pauline, 30, 31, 53.
 Putnam, Bill, 12, 53.
 Quesnell, Marian, 12, 18, 45.
 Quist, Edna, 13, 17, 18, 20, 26, 34, 39, 47, 53.
 Rader, Mary, 42.
 Ramey, Hal, 45.
 Ramsay, Dorothy, 18, 34, 53.
 Ramseur, Gwendolyn, 11.
 Rasmussen, Jack, 53.
 Rauh, Betty, 43.
 Rea, John, 40, 46.
 Reed, Charles, 46.
 Reed, Gareth, 12, 17, 42.
 Reed, Margaret, 44.
 Reed, Paul, 11.
 Reely, Jack, 42.
 Rehberg, Annie, 42.
 Rehberg, Esther, 45.
 Rehberg, John, 44.
 Rehorn, Marian, 18, 44.
 Reid, Robert, 21, 38, 56.
 Reiber, Lee, 45.
 Reimche, Marvin, 56.
 Reiter, Anna, 46.
 Renn, Peggy, 18, 26, 34, 56.
 Reser, John, 44.
 Retzer, Shirley, 13, 34, 45.
 Reynolds, Aline, 18, 30, 31, 34, 39, 56.
 Rice, Dorothy, 26, 31.
 Rice, Virginia, 13, 56.
 Riggs, Paul, 12, 37, 46, 53.
 Rimbey, Morris, 45.
 Rittenhouse, Betty, 42.
 Rittenhouse, Nora, 45.
 Robanski, Alexander, 45.
 Robbins, Lynn, 18, 30, 40, 53.
 Roberts, Barbara, 16, 17, 18, 21, 26, 38, 35, 45.
 Roberts, Mary Jane, 42.

Roberts, Ronald, 44.
 Robison, Betty, 18, 44.
 Robison, Mary, 4, 13, 16, 18, 26, 31, 35, 47, 53.
 Rock, Rose, 5, 53.
 Roecker, Bud, 20.
 Rogers, Dean, 18, 24, 40, 43.
 Rogers, Roy, 19, 42.
 Rogers, Tommy, 18, 43.
 Romine, Alan, 15, 21, 38, 40, 4.
 Romine, George, 40.
 Rone, Eldora, 43.
 Rose, Marjorie, 31.
 Ross, Elizabeth, 46.
 Rueble, Fay, 26.
 Russel, Joan, 19.
 Russell, June, 43.
 Russell, Lois, 53.
 Russell, Ray, 42.
 Russell, Ruth, 53.
 Salmeier, Clarence, 43.
 Salmeier, Vernon, 42.
 Sandahl, La Verne, 42.
 Sandahl, Le Roy, 42.
 Sanders, Mildred, 31, 46.
 Santo, Margaret, 18, 53.
 Santo, Marian, 44.
 Sauers, Grace, 11.
 Saunders, Dick, 44.
 Savage, Lena, 46.
 Schaeffer, Everett, 14, 53.
 Schatzel, Albert, 43.
 Schatzel, Herman, 46.
 Schaub, Derwent, 45.
 Schaub, Helen, 43.
 Schaub, Neil, 42.
 Schiffman, Helen, 54.
 Schiffner, Anne, 31, 54.
 Schiffner, Eileen, 31.
 Schmidt, Esther, 44.
 Schmidt, Lillian, 45.
 Schneidmiller, John, 45.
 Schneidmiller, Sam, 45.
 Schoessler, Walter, 44.
 Schreider, Mildred, 42.
 Schreiner, Eleanor, 45.
 Schreiner, June, 31.
 Schreiner, Sally, 26.
 Schubert, Robert, 45.
 Schultz, Ella, 56.
 Schwab, Leola, 54.
 Seitz, Edna, 18, 44.
 Seitz, James, 8, 18, 19, 20, 24, 54.
 Sept, Edwin, 43.
 Sept, Emma, 43.
 Shaler, Eldon, 44.
 Shaw, Clayton, 8, 12, 19, 20, 21, 24, 54.
 Shaw, Marion, 42.
 Sheldon, Howard, 44.
 Shelton, Mary Frances, 18.
 Shemwell, Elwood, 42.
 Sherwood, Dewey, 43.
 Sherwood, Kenneth, 42.
 Shick, Dick, 25, 42.
 Shimbo, Maxine, 26, 43.
 Shinn, Elaine, 44.
 Simet, Bernice, 11, 17, 18.
 Simmonds, Betty, 31, 54.
 Simmonds, Norman, 12, 46.
 Siverling, Bob, 18, 44.
 Skeen, Iona, 45.
 Slater, John, 35, 42.
 Smart, Thomas, 44.
 Smith, Fern, 12.
 Smith, Frances, 46.
 Smith, Kenneth, 40, 54.
 Smith, Sarah, 45.
 Smith, Vera, 54.
 Smith, Wilbur, 44.
 Smootz, Ilene, 17, 39, 54.
 Snider, Jackie, 26, 44.
 Soper, Ralph, 42.
 Spandish, Mary, 43.
 Spearman, Helen, 46.
 Spencer, Don, 37, 54.
 Sporleder, Helen, 43.
 Sporleder, Marvin, 18, 45.
 Steadman, Don, 54.
 Steadman, Richard, 54.
 Steelsmith, Clarence, 11.
 Stemmer, Joe, 42.
 Sterling, Agnes, 45.
 Stewart, Homer, 30.
 Stewart, June, 12, 42.
 Stewart, Robert, 47, 56.
 Still, Bill, 37.
 Stillwell, Howard, 35, 54.
 Stoller, Bernice, 26, 46.
 Stoller, Paul, 43.
 Stone, Shirley, 44.
 Storie, John, 12, 16, 18, 45.
 Stram, Virgil, 12, 54.
 Studebaker, Bette, 43.
 Sturgill, Stanley, 44.
 Stutzman, Opal, 45.
 Sutherland, John, 12, 20, 21, 30, 35, 42.
 Sutherland, Leila, 11.
 Swanson, Clarence, 45.
 Swanson, Leland, 38, 44.
 Swant, Gene, 44.
 Swauger, Fred, 18, 45.
 Swauger, Dorothy, 54.
 Swenson, Dorothy, 42.
 Tarnasky, Athaliah, 46.
 Tarwater, Curtis, 18.
 Tash, Berna, 26, 45.
 Tate, Ora, 13, 39, 54.
 Taylor, Billy, 42.
 Taylor, David, 18, 45.
 Taylor, Gene, 43, 54.
 Taylor, Harris, 44.
 Taylor, Marian, 18, 30, 31, 54.
 Taylor, Mildred, 42.
 Taylor, Paralee, 46.
 Telford, June, 42.
 Tempany, Helen, 54.
 Tempany, John, 30, 54.
 Teske, Edgar, 43.
 Texada, Mary Lois, 31, 54.
 Thomas, Jack, 18, 44.
 Thomas, Elsie May, 56.
 Thomas, Patsy, 18.
 Thompson, Beth, 13.
 Thompson, Don, 19, 20.
 Thompson, Elwin, 44.
 Thorington, Dallas, 42.
 Tillotson, Keith, 43.
 Timm, Betty June, 18, 21, 30, 35, 43.
 Tomlinson, Dorothy, 43.
 Toner, Patti, 45.
 Torrey, Leland, 42.
 Torrey, Willabelle, 54.
 Transeth, Elf, 42.
 Transeth, Norman, 14, 18, 19, 24, 40, 45.
 Transeth, Willard, 43.
 Treadwell, Alva, 11.
 Trousdale, June, 45.
 Trousdale, Ross, 43.
 Trout, Phyllis, 45.
 Troupe, Roxy, 5.
 Trumble, Edythe, 54.
 Tuke, Joe, 44.
 Van Buskirk, Frankie, 44.
 Van Donge, Bardel, 54.
 Van Scotter, Alvin, 44.
 Vedder, James, 44.
 Vernon, VaLoris, 56.
 Vibbert, Mahlon, 43.
 Vigneron, Jack, 44.
 Vratos, Annie, 43.
 Vratos, Lula, 43.
 Wagner, Martha, 19, 45.
 Waggoner, Wilma, 45.
 Walker, Bernice, 31.
 Walker, Marjorie, 18.
 Walker, Ruth, 31, 54.
 Wallace, Dail, 44.
 Wallace, Gail, 44.
 Wallace, James, 40.
 Walters, Bernice, 55.
 Walton, Bill, 44.
 Wamble, June, 26, 43, 34, 18.
 Ward, Florence, 19, 46.
 Warfield, Myra, 44.
 Warner, Robert, 46.
 Wasser, Wilma, 11, 19.
 Watson, Lena, 45, 18.
 Watts, Nell, 46, 19.
 Weatherman, Peggy, 18, 38.
 Weatherman, Wilma, 31, 43.
 Weaver, Charles, 18, 19, 20, 24, 40, 41.
 Weaver, Esther, 42.
 Weaver, Ethel, 18, 39, 55.
 Webb, Mary, 18, 45.
 Webb, Ruth, 20, 13, 12.
 Webb, Warren, 44.
 Webber, Elaine, 16, 31, 55.
 Webber, Hubert, 19, 46.
 Weber, Bill, 8, 19, 20, 21, 25, 55.
 Webster, Gloria, 43.
 Wells, Marjorie, 26, 45.
 Wells, Richard, 42.
 Wells, Robert, 12, 43.
 Wendler, Ruth, 26, 45.
 Wendt, Ernest, 42.
 West, Kathleen, 12, 39, 55.
 Weston, Fred, 43.
 White, Mary, 19, 46.
 White, Orville, 42.
 White, Vivian, 44.
 Whitehead, Eldon, 12, 46.
 Whittington, Laura, 31, 44.
 Whybark, Betty, 46.
 Whybark, Nadine, 43.
 Wiebe, David, 55.
 Wiebe, Lillian, 31, 55.
 Wiebe, Ruth, 43.
 Widener, Lois Jean, 44.
 Willaby, Virginia, 18, 43.
 Williams, Treelah, 46.
 Williams, Harold, 55.
 Williamson, William, 55.
 Wilson, Helen, 44.
 Wilson, Marion, 42.
 Wilson, Woodrow, 44.
 Wiseman, Joe, 42.
 Wiseman, Kenneth, 12.
 Witt, Earl, 45.
 Witt, Lewis, 43.
 Wittrock, Henry, 42.
 Wolfe, Jean, 44.
 Woods, Frank, 42.
 Woods, Jack, 19, 37, 40, 55.
 Woodward, Barbara, 13, 18, 26, 44.
 Woodward, Peggy, 12, 13, 18, 20, 21, 34, 39, 55.
 Woodworth, James, 19, 44.
 Woolsey, Marvin, 45.
 Wooton, Faye, 42.
 Wooton, Jeanne, 26, 34, 44.
 Wright, Betty Jean, 43.
 Wright, Lester, 44.
 Yeend, Dorothy, 45.
 Yeend, Paul, 8, 18, 19, 20, 25, 40, 43.
 Yenney, Lester, 43.
 Yeomans, Frances, 11.
 Yokom, Lela, 45.
 Youdovitch, Esther, 31, 43.
 Young, Clair, 42.
 Young, Martha, 11, 13.
 Zaring, Bob, 55.
 Zier, Arthur, 12.
 Zier, Billy, 24.
 Zier, Robert, 45.

